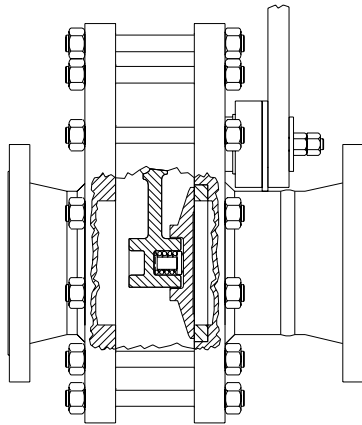


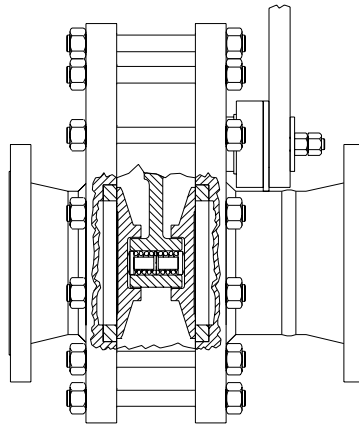
CLASS 150 & 300 SD, DD, LD, LB SERIES

FIGURE NUMBER CODE

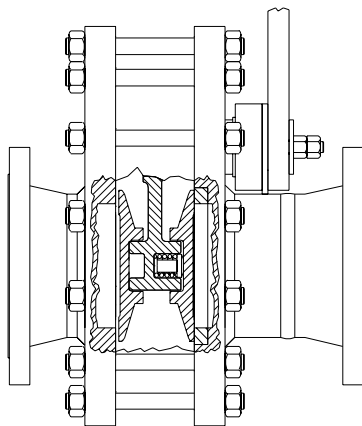
STANDARD VALVES



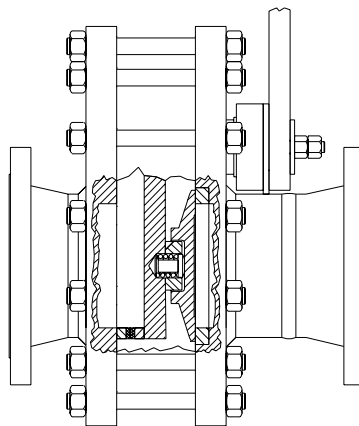
SINGLE DISC "SD SERIES"



DOUBLE DISC "DD SERIES"



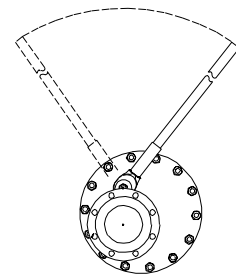
LENS DISC "LD SERIES"



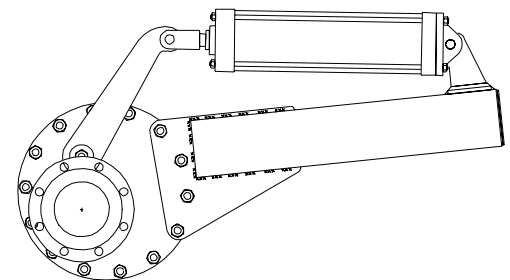
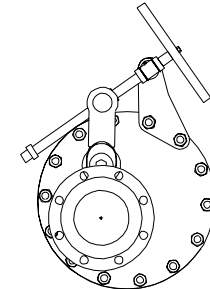
LOCK BAR "LB SERIES"

OPERATORS

LEVER



WHEEL



CYLINDER

EXAMPLE: Class 150 Flanged Carbon Steel Valve, Single Disc, with Stellite #6 Seat & Disc, Teflon Packing, Air Cylinder Operated:

I II, III, IV V VI VII VIII
 SD - 151C - 1 - T - A - **

I SERIES	II ANSI CLASS	III END CONNECTIONS	IV BODY MATERIAL	V SEAT / DISC MATERIAL	VI SEALS & PACKING *	VII OPERATOR
SD (Single Disc) DD (Double Disc) LD (Lens Disc) LB (Lock Bar)	15 (150) 30 (300)	1 (Flanged) 9 (Other)	C (Carbon Steel) S (316 SS) Z (Other)	1 (Stell 6/Stell 6) 9 (Other)	T (Teflon) N (High Temp)	L (Lever) W (Wheel) A (Air Cylinder)

* Refer to PACKING OPTIONS SHEET for explanation of seals and packing.

** Suffix for accessories would be added if necessary. See STANDARD ACCESSORIES for available accessories.

SS-9-90

EVERLASTING

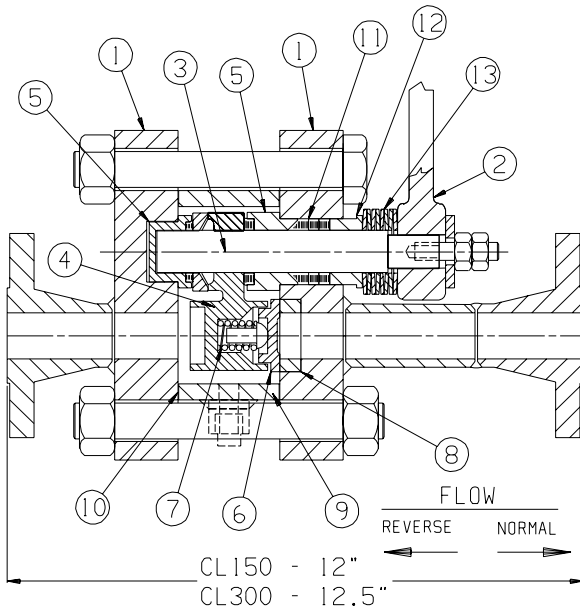
VALVE
COMPANY, INC

108 SOMOGYI CT. S. PLAINFIELD N.J. 07080
TEL: 908-769-0700 FAX: 908-769-8697

Member
VMA

CLASS 150 & 300 SD, DD, LD SERIES

CL150
CL300 **1"**



SINGLE DISC ("SD" SERIES)

SPECIFICATIONS

Rating: CL150 & CL300 ANSI B16.34

Temp. Range: -20 F to 750 F

Ends: RF Flanged

Body: Carbon Steel & 316 Stainless Steel

Seats & Discs: Cast Stellite #6

Configurations: SD (Single Disc) shown at left

DD (Double Disc) bottom left

LD (Lens Disc) bottom right

Operators: Lever; Handwheel; Air Cylinder

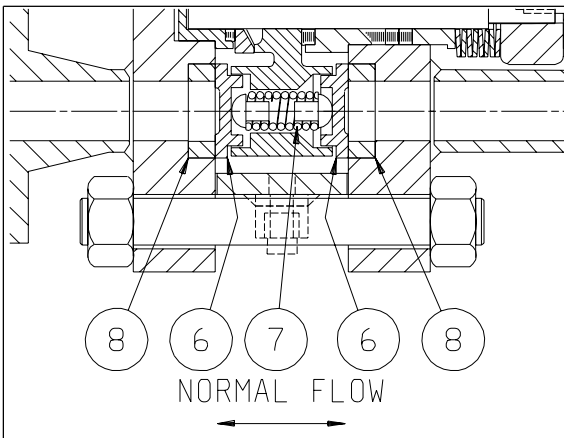
Accessories: Limit Switches; Solenoid; Fail Safe (Air Reservoir & Solenoid). Refer to Standard Accessory Sheets for accessory specifications.

Est. Cv : 40

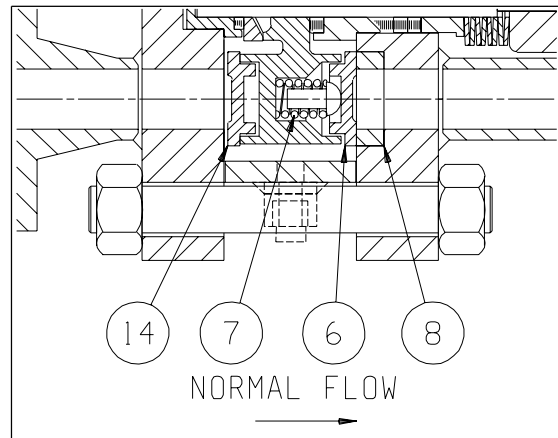
Notes:

1) All valves are supplied with (1) 3/8" Purge/Drain connection. (Shown in dotted lines on drawings)

NO.	NAME	DESCRIPTION (C.S. BODY)	DESCRIPTION (S.S. BODY)
1	Body Plates	Carbon Steel A516 Gr. 70	Stainless Steel A240 Gr. 316 w/Stell. #6
2	Wrench	Carbon Steel	Carbon Steel
3	Post	17-4 PH Stainless Steel	17-4 PH Stainless Steel
4	Lever Arm	Cast 17-4 PH Stainless Steel	Cast 17-4 PH Stainless Steel
5	Bearings	Semi - Steel	Nitronic 60
6	Disc	Cast Stellite #6	Cast Stellite #6
7	Spring	17-7 PH Stainless Steel	17-7 PH Stainless Steel
8	Seat	Cast Stellite #6	Cast Stellite #6
9	Spacer Ring	Carbon Steel A106 Gr. C	Stainless Steel A312 TP316
10	Gaskets	Corrugated 304 Stainless Steel	Corrugated 304 Stainless Steel
11	Packing	See "Packing Options" Sheet	See "Packing Options" Sheet
12	Gland	Nitronic 60	Nitronic 60
13	Gland Springs	17-7 PH Stainless Steel	17-7 PH Stainless Steel
14	Lens Disc	Cast Stellite #6	Cast Stellite #6



DOUBLE DISC ("DD" SERIES)



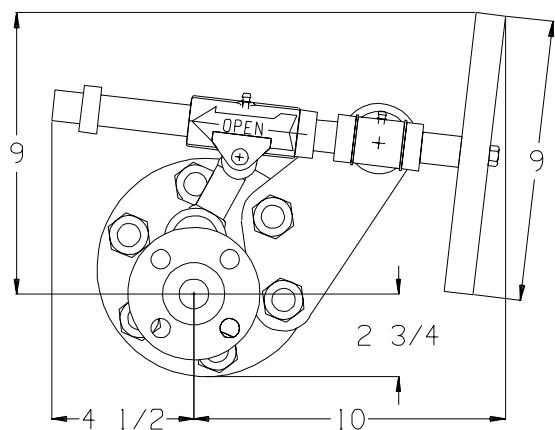
LENS DISC ("LD" SERIES)

EVERLASTING

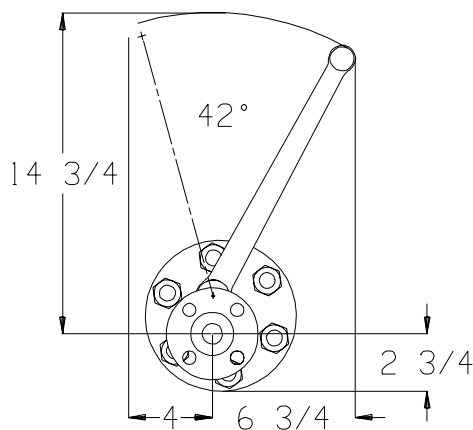
VALVE
COMPANY, INC

108 SOMOGYI CT., S. PLAINFIELD N.J. 07080
TEL: 908-769-0700 FAX: 908-769-8697

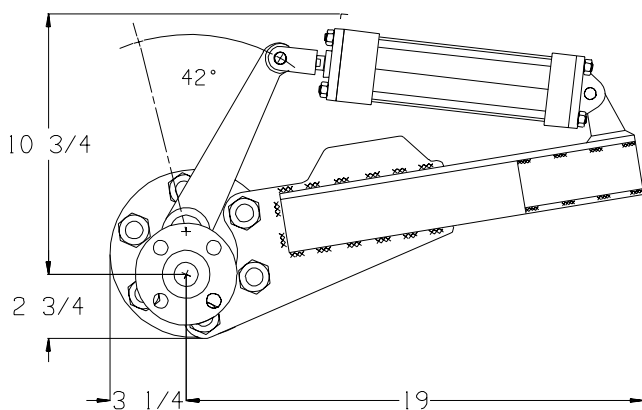
Member
VMA



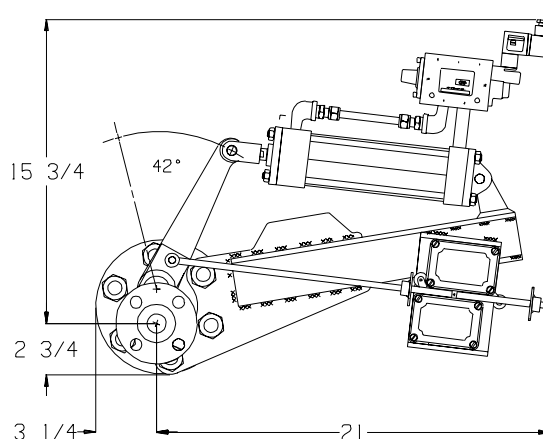
HANDWHEEL OPERATOR



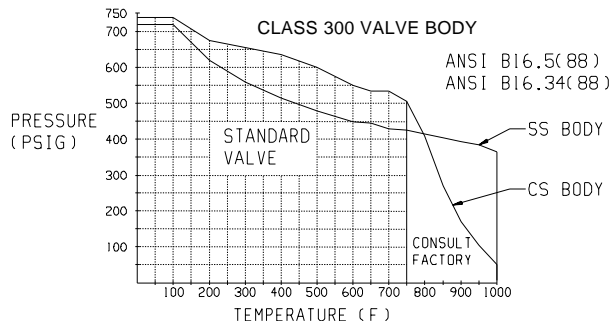
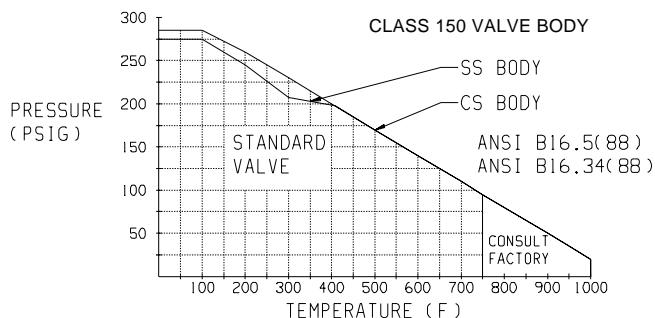
LEVER OPERATOR



AIR CYLINDER OPERATOR



A/C W/ LIMIT SWITCHES & SOLENOID



MAXIMUM DIFFERENTIAL PRESSURE DURING VALVE CYCLING FOR CL150 & CL300 (4)

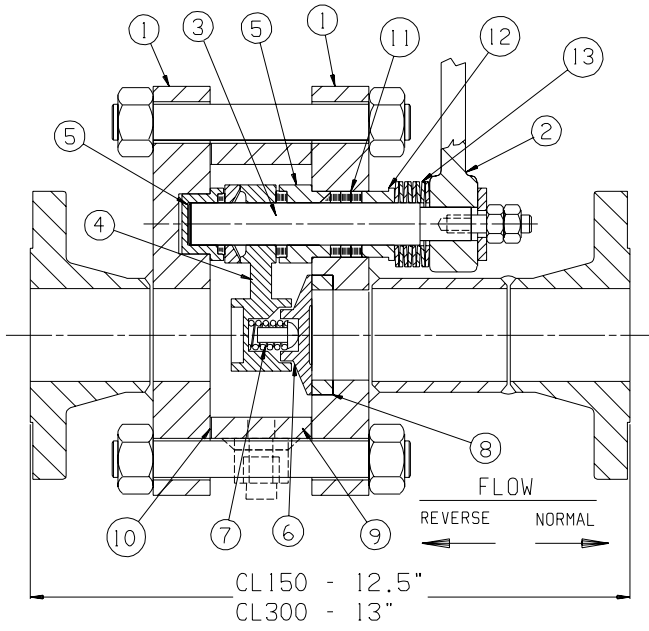
FLUID	CYL @ 60 PSI AIR	CYL @ 80 PSI AIR	CYL @ 100 PSI AIR	WRENCH	HANDWHEEL
CLEAN FLUID	FULL RATING	FULL RATING	FULL RATING	275	FULL RATING
20% SLURRY ⁽¹⁾	FULL RATING	FULL RATING	FULL RATING	200	FULL RATING
50% SLURRY ⁽¹⁾	FULL RATING	FULL RATING	FULL RATING	180	FULL RATING
75% SLURRY ⁽¹⁾	FULL RATING	FULL RATING	FULL RATING	160	715
100% SLURRY	FULL RATING	FULL RATING	FULL RATING	135	690

- NOTES:
1. For vertically positioned valves in slurry service, use 100% slurry value. For solid columns, Consult factory.
 2. All air cylinder values in Table include a Safety Factor of 1.5.
 3. Gear, hydraulic or electric operators can be sized per customer specs as applicable - consult factory.
 4. Consult Everlasting for higher differential pressures or for any clarifications.

CLASS 150 & 300 SD, DD, LD SERIES

CL150
CL300

1.5



SINGLE DISC ("SD" SERIES)

SPECIFICATIONS

Rating: CL150 & CL300 ANSI B16.34

Temp. Range: -20 F to 750 F

Ends: RF Flanged

Body: Carbon Steel & 316 Stainless Steel

Seats & Discs: Cast Stellite #6

Configurations: SD (Single Disc) shown at left

DD (Double Disc) bottom left

LD (Lens Disc) bottom right

Operators: Lever; Handwheel; Air Cylinder

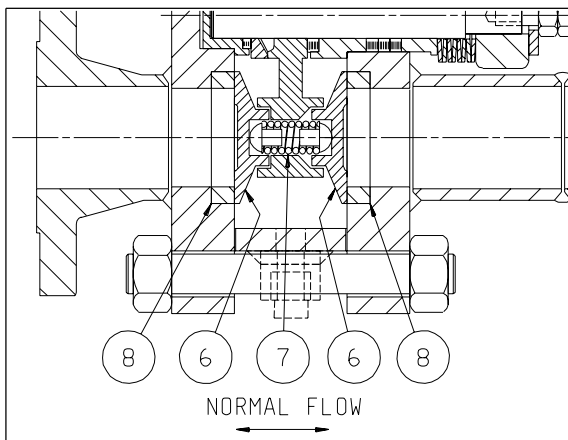
Accessories: Limit Switches; Solenoid; Fail Safe (Air Reservoir & Solenoid). Refer to Standard Accessory Sheets for accessory specifications.

Est. Cv : 108

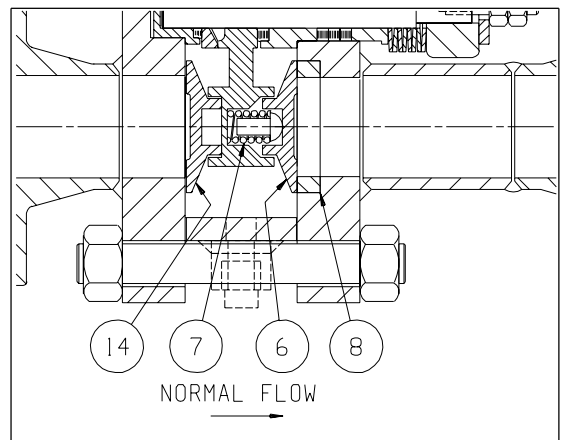
Notes:

1) All valves are supplied with (1) 1/2" Purge/Drain connection. (Shown in dotted lines on drawings)

NO.	NAME	DESCRIPTION (C.S. BODY)	DESCRIPTION (S.S. BODY)
1	Body Plates	Carbon Steel A516 Gr. 70	Stainless Steel A240 Gr. 316 w/ Stell. #6
2	Wrench	Carbon Steel	Carbon Steel
3	Post	17-4 PH Stainless Steel	17-4 PH Stainless Steel
4	Lever Arm	Cast 17-4 PH Stainless Steel	Cast 17-4 PH Stainless Steel
5	Bearings	Semi - Steel	Nitronic 60
6	Disc	Cast Stellite #6	Cast Stellite #6
7	Spring	17-7 PH Stainless Steel	17-7 PH Stainless Steel
8	Seat	Cast Stellite #6	Cast Stellite #6
9	Spacer Ring	Carbon Steel A106 Gr. C	Stainless Steel A312 TP316
10	Gaskets	Corrugated 304 Stainless Steel	Corrugated 304 Stainless Steel
11	Packing	See "Packing Options" Sheet	See "Packing Options" Sheet
12	Gland	Nitronic 60	Nitronic 60
13	Gland Springs	17-7 PH Stainless Steel	17-7 PH Stainless Steel
14	Lens Disc	Cast Stellite #6	Cast Stellite #6



DOUBLE DISC ("DD" SERIES)



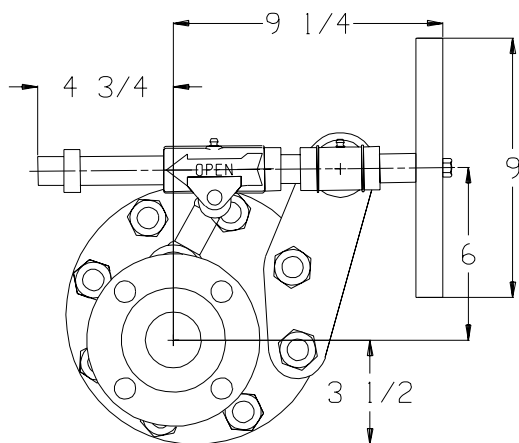
LENS DISC ("LD" SERIES)

EVERLASTING

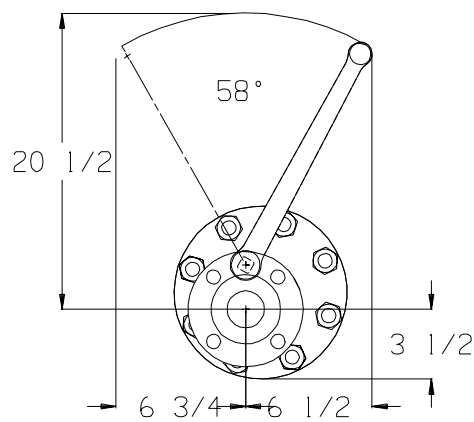
VALVE
COMPANY, INC

108 SOMOGYI CT. S. PLAINFIELD N.J. 07080
TEL: 908-769-0700 FAX: 908-769-8697

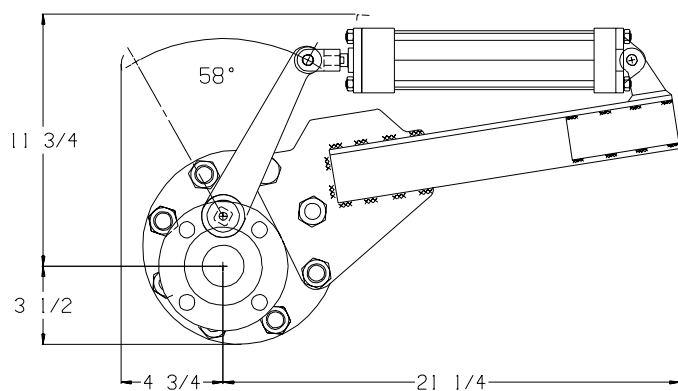
Member
VMA



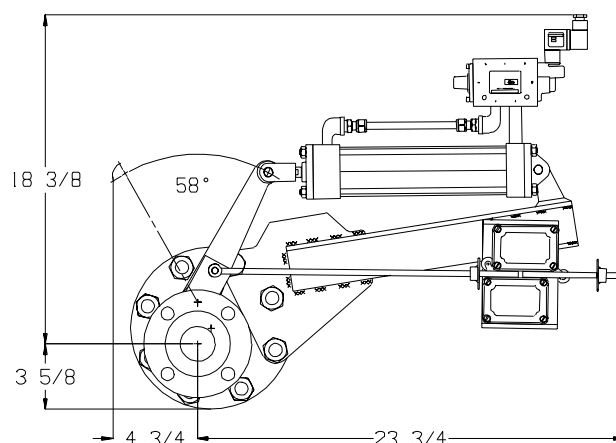
HANDWHEEL OPERATOR



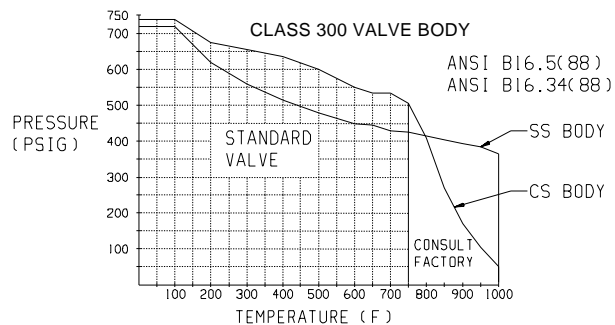
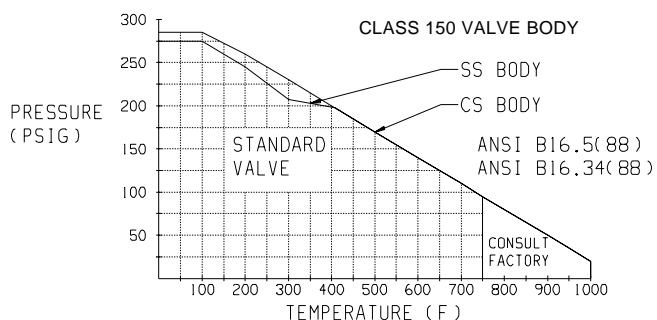
LEVER OPERATOR



AIR CYLINDER OPERATOR



A/C WITH LIMIT SWITCHES & SOLENOID



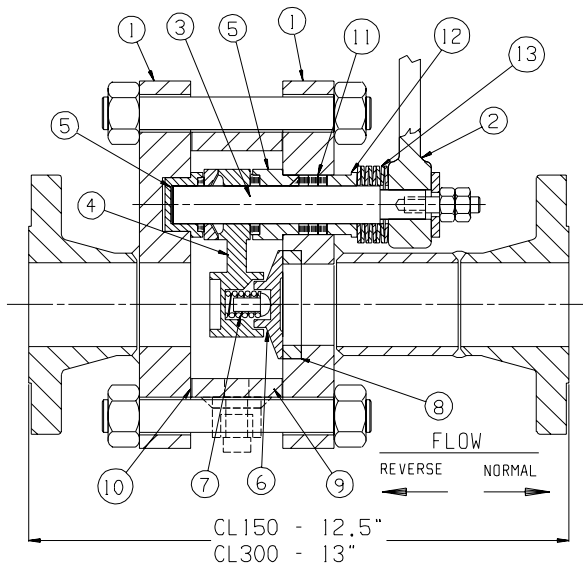
MAXIMUM DIFFERENTIAL PRESSURE DURING VALVE CYCLING FOR CL150 & CL300 (4)

FLUID	CYL @ 60 PSI AIR	CYL @ 80 PSI AIR	CYL @ 100 PSI AIR	WRENCH	HANDWHEEL
CLEAN FLUID	230	325	420	275	FULL RATING
20% SLURRY ⁽¹⁾	180	275	370	200	FULL RATING
50% SLURRY ⁽¹⁾	165	260	355	180	FULL RATING
75% SLURRY ⁽¹⁾	150	245	340	160	715
100% SLURRY	130	225	320	135	690

- NOTES:
1. For vertically positioned valves in slurry service, use 100% slurry value. For solid columns, consult factory.
 2. All air cylinder values in Table include a Safety Factor of 1.5.
 3. Gear, hydraulic or electric operators can be sized per customer specs as applicable - consult factory.
 4. Consult Everlasting for higher differential pressures or for any clarifications.

CLASS 150 & 300 SD, DD, LD SERIES

CL150 2"
CL300



SINGLE DISC ("SD" SERIES)

SPECIFICATIONS

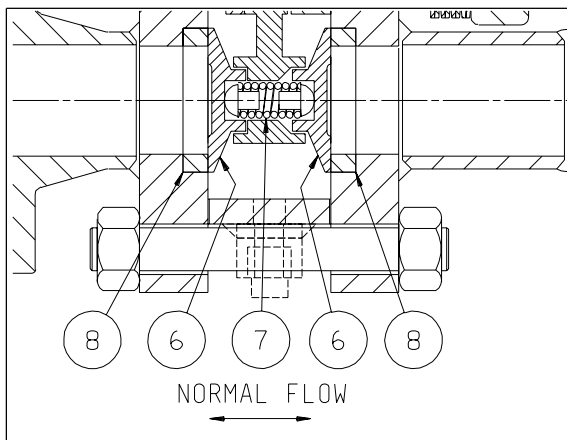
Rating: CL150 & CL300 ANSI B16.34
Temp. Range: -20 F to 750 F
Ends: RF Flanged
Body: Carbon Steel & 316 Stainless Steel
Seats & Discs: Cast Stellite #6
Configurations: SD (Single Disc) shown at left
DD (Double Disc) bottom left
LD (Lens Disc) bottom right
Operators: Lever; Handwheel; Air Cylinder
Accessories: Limit Switches; Solenoid; Fail Safe (Air Reservoir & Solenoid). Refer to Standard Accessory Sheets for accessory specifications.

Est. Cv : 132

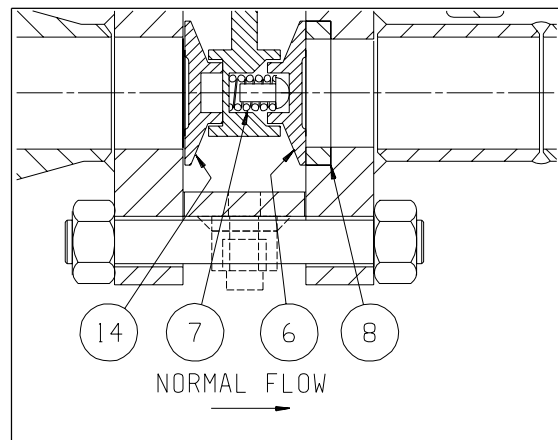
Notes:

1) All valves are supplied with (1) 1/2" Purge/Drain connection. (Shown in dotted lines on drawings)

NO.	NAME	DESCRIPTION (C.S. BODY)	DESCRIPTION (S.S. BODY)
1	Body Plates	Carbon Steel A516 Gr. 70	Stainless Steel A240 Gr. 316 w/ Stell. #6
2	Wrench	Carbon Steel	Carbon Steel
3	Post	17-4 PH Stainless Steel	17-4 PH Stainless Steel
4	Lever Arm	Cast 17-4 PH Stainless Steel	Cast 17-4 PH Stainless Steel
5	Bearings	Semi - Steel	Nitronic 60
6	Disc	Cast Stellite #6	Cast Stellite #6
7	Spring	17-7 PH Stainless Steel	17-7 PH Stainless Steel
8	Seat	Cast Stellite #6	Cast Stellite #6
9	Spacer Ring	Carbon Steel A106 Gr. C	Stainless Steel A312 TP316
10	Gaskets	Corrugated 304 Stainless Steel	Corrugated 304 Stainless Steel
11	Packing	See "Packing Options" Sheet	See "packing Options" Sheet
12	Gland	Nitronic 60	Nitronic 60
13	Gland Springs	17-7 PH Stainless Steel	17-7 PH Stainless Steel
14	Lens Disc	Carbon Steel A514 Gr. B	17-4 PH Stainless Steel



DOUBLE DISC ("DD" SERIES)



LENS DISC ("LD" SERIES)

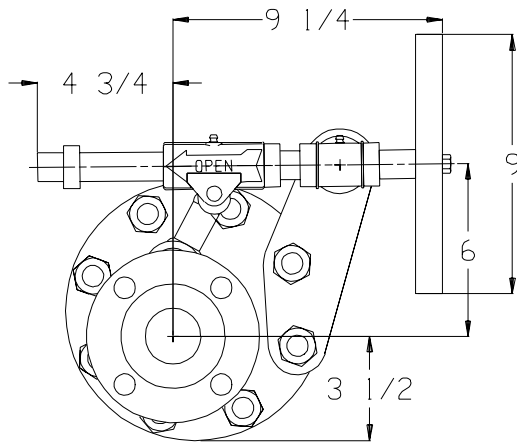
EVERLASTING

VALVE
COMPANY, INC

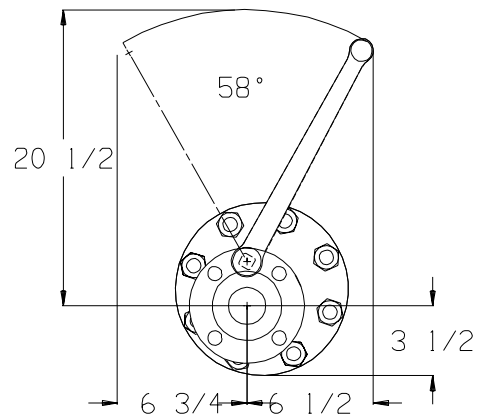
108 SOMOGYI CT. S. PLAINFIELD N.J. 07080
TEL: 908-769-0700 FAX: 908-769-8697

Member
VMA

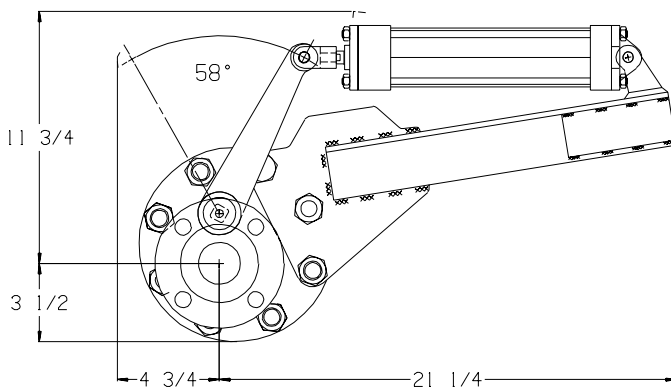
CLASS 150 & 300 SD, DD, LD SERIES



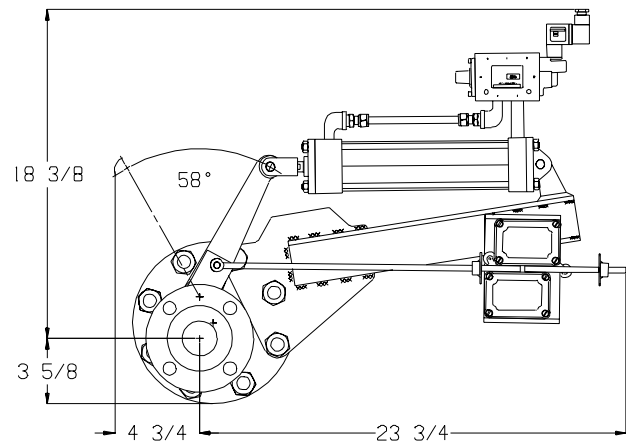
HANDWHEEL OPERATOR



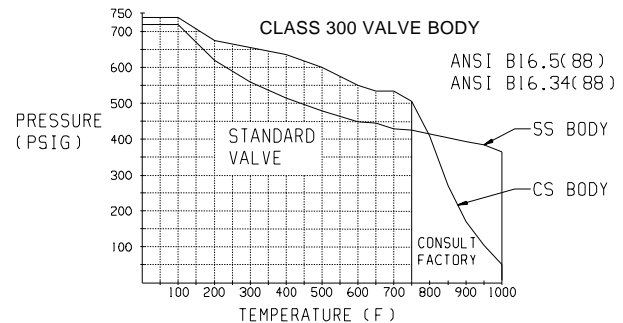
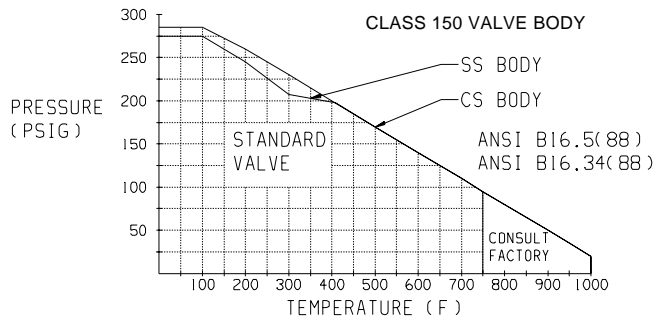
LEVER OPERATOR



AIR CYLINDER OPERATOR



A/C WITH LIMIT SWITCHES & SOLENOID



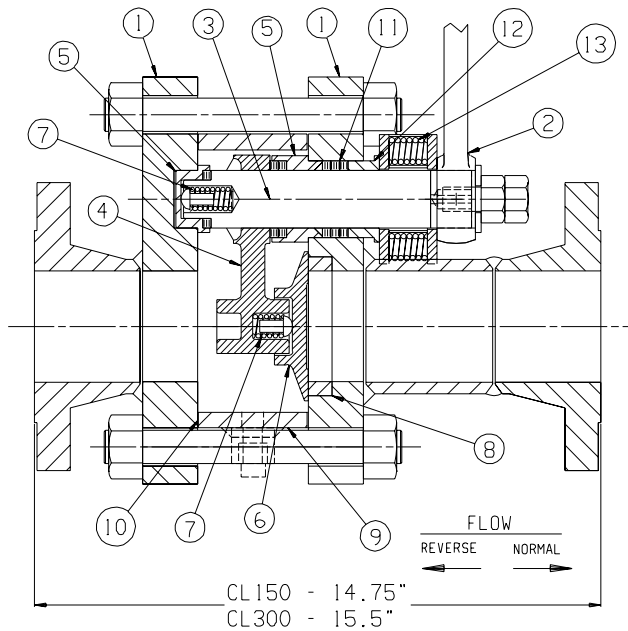
MAXIMUM DIFFERENTIAL PRESSURE DURING VALVE CYCLING FOR CL150 & CL300 (4)

FLUID	CYL @ 60 PSI AIR	CYL @ 80 PSI AIR	CYL @ 100 PSI AIR	WRENCH	HANDWHEEL
CLEAN FLUID	220	310	400	200	600
20% SLURRY ⁽¹⁾	170	260	350	150	550
50% SLURRY ⁽¹⁾	155	245	335	135	535
75% SLURRY ⁽¹⁾	140	230	320	120	520
100% SLURRY	120	210	300	100	500

- NOTES:
1. For vertically positioned valves in slurry service, use 100% slurry value. For solid columns, consult factory.
 2. All air cylinder values in Table include a Safety Factor of 1.5.
 3. Gear, hydraulic or electric operators can be sized per customer specs as applicable - consult factory.
 4. Consult Everlasting for higher differential pressures or for any clarifications.

CLASS 150 & 300 SD, DD, LD SERIES

CL150 3"
CL300



SINGLE DISC ("SD" SERIES)

SPECIFICATIONS

Rating: CL150 & CL300 ANSI B16.34

Temp. Range: -20 F to 750 F

Ends: RF Flanged

Body: Carbon Steel & 316 Stainless Steel

Seats & Discs: Cast Stellite #6

Configurations: SD (Single Disc) shown at left

DD (Double Disc) bottom left

LD (Lens Disc) bottom right

Operators: Lever; Handwheel; Air Cylinder

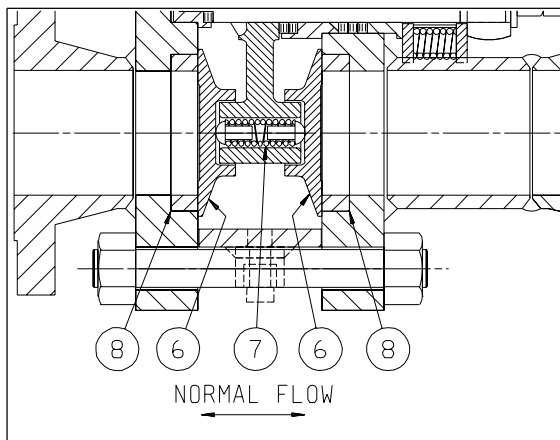
Accessories: Limit Switches; Solenoid; Fail Safe (Air Reservoir & Solenoid). Refer to Standard Accessory Sheets for accessory specifications.

Est. Cv : 320

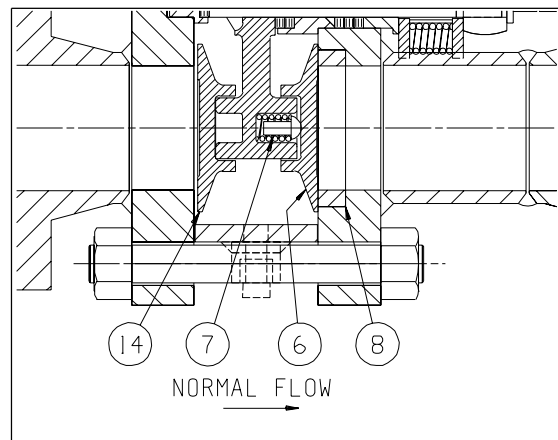
Notes:

1) All valves are supplied with (1) 1/2" Purge/Drain connection. (Shown in dotted lines on drawings)

NO.	NAME	DESCRIPTION (C.S. BODY)	DESCRIPTION (S.S. BODY)
1	Body Plates	Carbon Steel A516 Gr. 70	Stainless Steel A240 Gr. 316 w/ Stell. #6
2	Wrench	Carbon Steel	Carbon Steel
3	Post	17-4 PH Stainless Steel	17-4 PH Stainless Steel
4	Lever Arm	Cast 17-4 PH Stainless Steel	Cast 17-4 PH Stainless Steel
5	Bearings	Semi - Steel	Nitronic 60
6	Disc	Cast Stellite #6	Cast Stellite #6
7	Springs	17-7 PH Stainless Steel	17-7 PH Stainless Steel
8	Seat	Cast Stellite #6	Cast Stellite #6
9	Spacer Ring	Carbon Steel A106 Gr. C	Stainless Steel A312 TP316
10	Gaskets	Corrugated 304 Stainless Steel	Corrugated 304 Stainless Steel
11	Packing	See "Packing Options" Sheet	See "Packing Options" Sheet
12	Gland	Nitronic 60	Nitronic 60
13	Gland Springs	17-7 PH Stainless Steel	17-7 PH Stainless Steel
14	Lens Disc	Cast Stellite #6	Cast Stellite #6



DOUBLE DISC ("DD" SERIES)



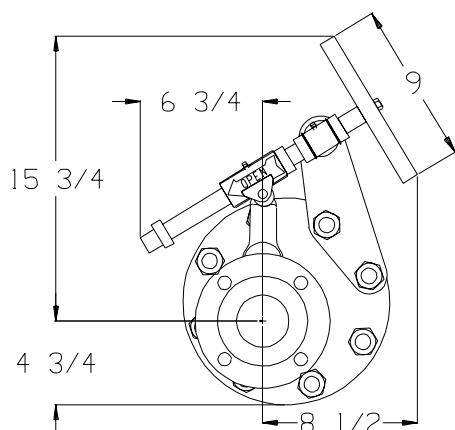
LENS DISC ("LD" SERIES)

EVERLASTING

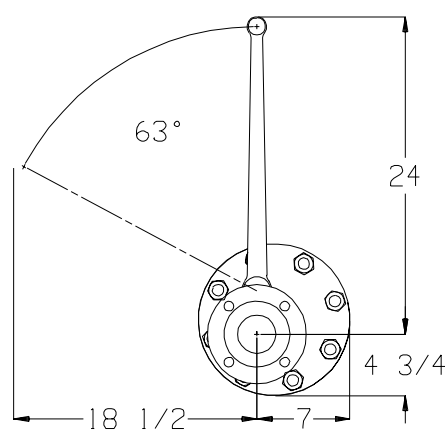
VALVE
COMPANY, INC

108 SOMOGYI CT. S. PLAINFIELD N.J. 07080
TEL: 908-769-0700 FAX: 908-769-8697

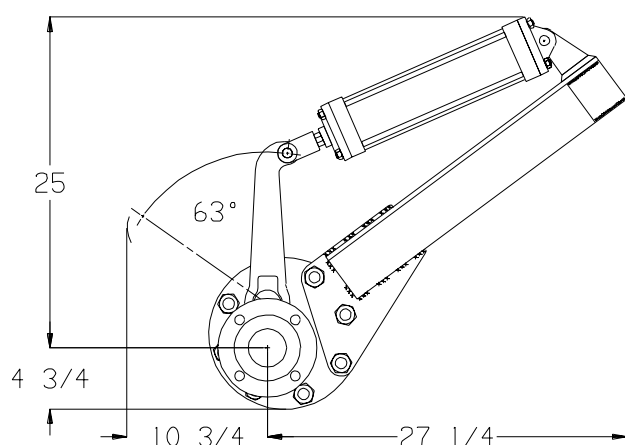
Member
VMA



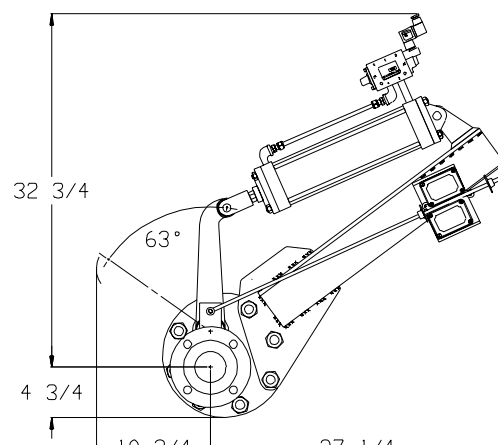
HANDWHEEL OPERATOR



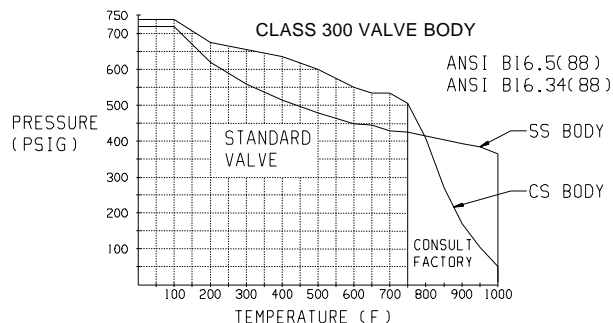
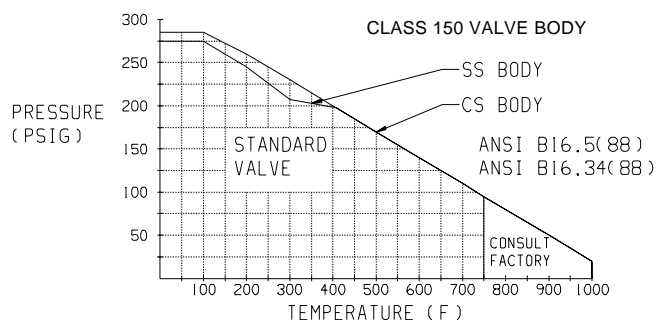
LEVER OPERATOR



AIR CYLINDER OPERATOR



A/C WITH LIMIT SWITCHES & SOLENOID



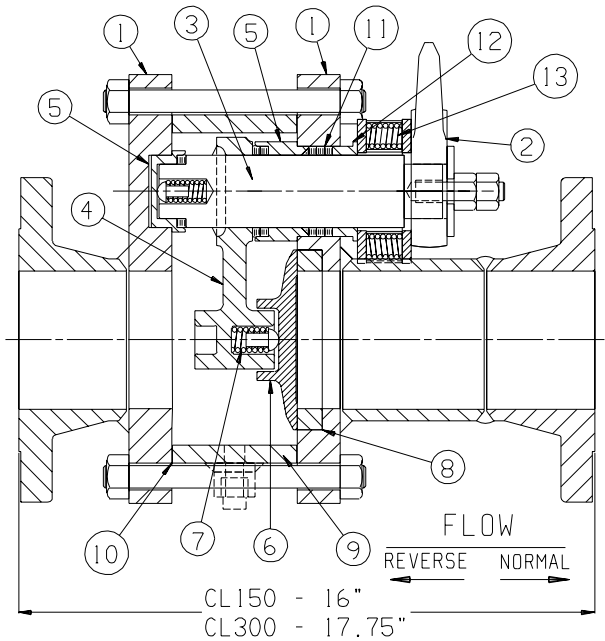
MAXIMUM DIFFERENTIAL PRESSURE DURING VALVE CYCLING FOR CL150 & CL300 (4)

FLUID	CYL @ 60 PSI AIR	CYL @ 80 PSI AIR	CYL @ 100 PSI AIR	WRENCH	HANDWHEEL
CLEAN FLUID	250	350	440	100	FULL RATING
20% SLURRY ⁽¹⁾	200	300	390	50	450
50% SLURRY ⁽¹⁾	185	285	375	35	300
75% SLURRY ⁽¹⁾	170	270	360	20	175
100% SLURRY	150	250	340	5	60

- NOTES:**
1. For vertically positioned valves in slurry service, use 100% slurry value. For solid columns, Consult factory.
 2. All air cylinder values in Table include a Safety Factor of 1.5.
 3. Gear, hydraulic or electric operators can be sized per customer specs as applicable - consult factory.
 4. Consult Everlasting for higher differential pressures or for any clarifications.

CLASS 150 & 300 SD, DD, LD SERIES

CL150
CL300 **4"**



SINGLE DISC ("SD" SERIES)

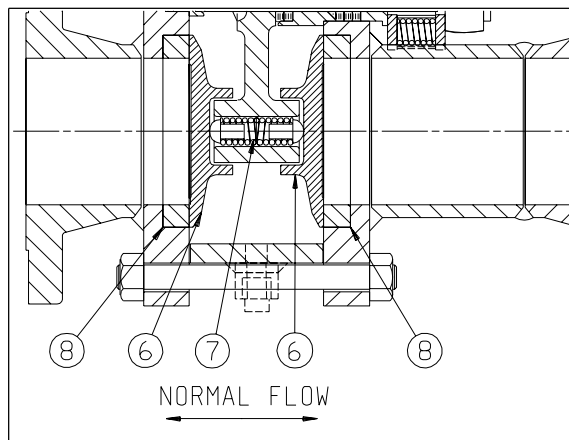
SPECIFICATIONS

Rating: CL150 & CL300 ANSI B16.34
 Temp. Range: -20 F to 750 F
 Ends: RF Flanged
 Body: Carbon Steel & 316 Stainless Steel
 Seats & Discs: Cast Stellite #6
 Configurations: SD (Single Disc) shown at left
 DD (Double Disc) bottom left
 LD (Lens Disc) bottom right
 Operators: Lever; Handwheel; Air Cylinder
 Accessories: Limit Switches; Solenoid; Fail Safe (Air Reservoir & Solenoid). Refer to Standard Accessory Sheets for accessory specifications.
 Est. Cv : 484

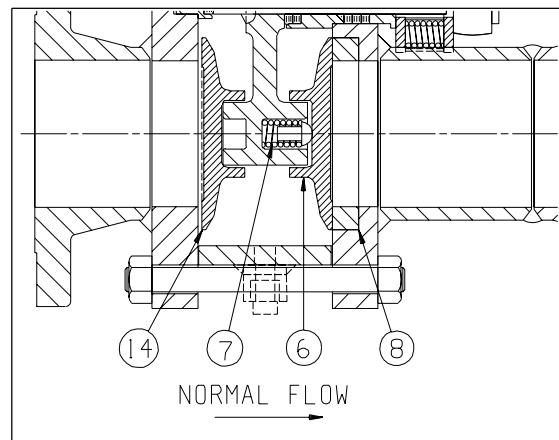
Notes:

1) All valves are supplied with (1) 1/2" Purge/Drain connection. (Shown in dotted lines on drawings)

NO	NAME	DESCRIPTION (C.S. BODY)	DESCRIPTION (S.S. BODY)
1	Body Plates	Carbon Steel A516 Gr. 70	Stainless Steel A240 Gr. 316 w/Stell. #6
2	Wrench	Carbon Steel	Carbon Steel
3	Post	17-4 PH Stainless Steel	17-4 PH Stainless Steel
4	Lever Arm	Cast 17-4 PH Stainless Steel	Cast 17-4 PH Stainless Steel
5	Bearings	Semi - Steel	Nitronic 60
6	Disc	Cast Stellite #6	Cast Stellite #6
7	Springs	17-7 PH Stainless Steel	17-7 PH Stainless Steel
8	Seat	Cast Stellite #6	Cast Stellite #6
9	Spacer Ring	Carbon Steel A515 Gr. 70	Stainless Steel A240 Gr. 316
10	Gaskets	Corrugated 304 Stainless Steel	Corrugated 304 Stainless Steel
11	Packing	See "Packing Options" Sheet	See "Packing Options" Sheet
12	Gland	Nitronic 60	Nitronic 60
13	Gland Springs	17-7 PH Stainless Steel	17-7 PH Stainless Steel
14	Lens Disc	Cast Stellite #6	Cast Stellite #6



DOUBLE DISC ("DD" SERIES)



LENS DISC ("LD" SERIES)

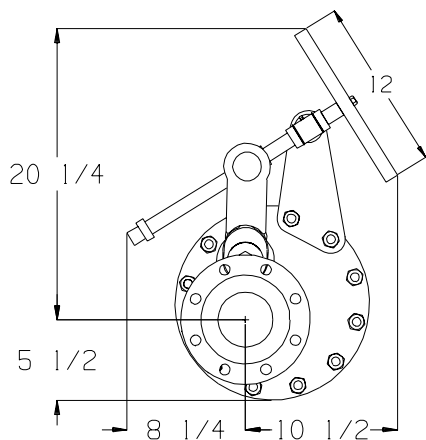
EVERLASTING

VALVE
COMPANY, INC

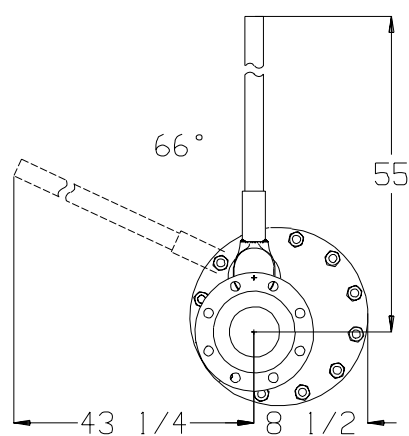
108 SOMOGYI CT., S. PLAINFIELD N.J. 07080
 TEL: 908-769-0700 FAX: 908-769-8697

Member
VMA

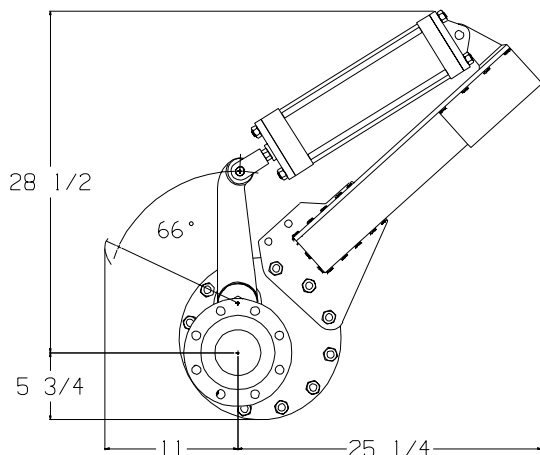
CLASS 150 & 300 SD, DD, LD SERIES



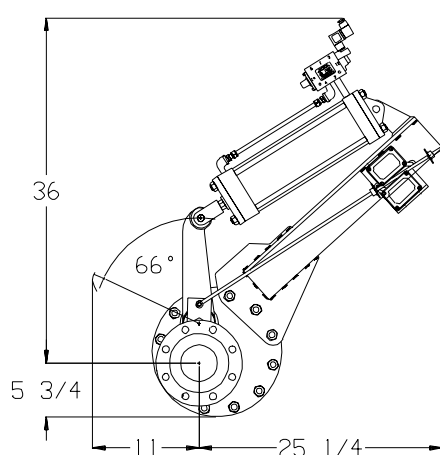
HANDWHEEL OPERATOR



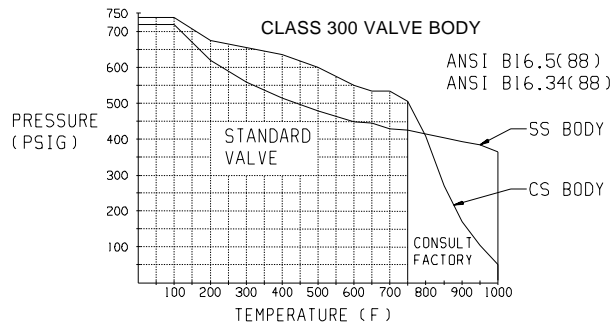
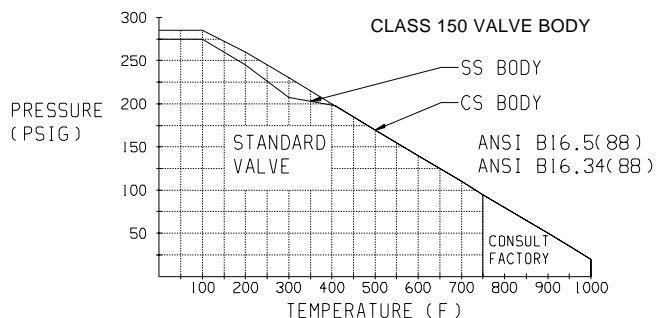
LEVER OPERATOR



AIR CYLINDER OPERATOR



A/C WITH LIMIT SWITCHES & SOLENOID



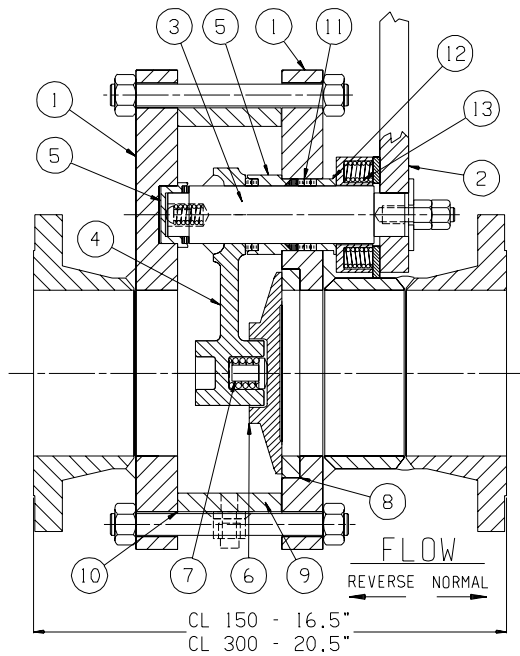
MAXIMUM DIFFERENTIAL PRESSURE DURING VALVE CYCLING FOR CL150 & CL300 (4)

FLUID	CYL @ 60 PSI AIR	CYL @ 80 PSI AIR	CYL @ 100 PSI AIR	WRENCH	HANDWHEEL
CLEAN FLUID	180	250	315	170	FULL RATING
20% SLURRY ⁽¹⁾	130	200	265	120	525
50% SLURRY ⁽¹⁾	115	185	250	105	460
75% SLURRY ⁽¹⁾	100	170	235	90	390
100% SLURRY	80	150	215	70	300

- NOTES:
1. For vertically positioned valves in slurry service, use 100% slurry value. For solid columns, Consult factory.
 2. All air cylinder values in Table include a Safety Factor of 1.5.
 3. Gear or electric operators can be sized per customer specs as applicable - consult factory
 4. Consult Everlasting for higher differential pressures or for any clarifications.

CLASS 150 & 300 SD, DD, LD, LB SERIES

CL150
CL300 **6"**



SINGLE DISC ("SD" SERIES)

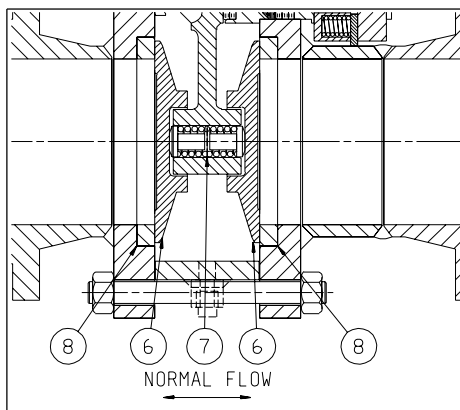
SPECIFICATIONS

Rating: CL150 & CL300 ANSI B16.34
 Temp. Range: -20 F to 750 F
 Ends: RF Flanged
 Body: Carbon Steel & 316 Stainless Steel
 Seats & Discs: Cast Stellite #6
 Configurations: SD (Single Disc) shown at left
 DD (Double Disc) bottom left
 LD (Lens Disc) bottom center
 LB (Lock Bar) bottom right
 Operators: Lever; Handwheel; Air Cylinder
 Accessories: Limit Switches; Solenoid; Fail Safe (Air Reservoir & Solenoid). Refer to Standard Accessory Sheets for accessory specifications.
 Est. Cv : 1248

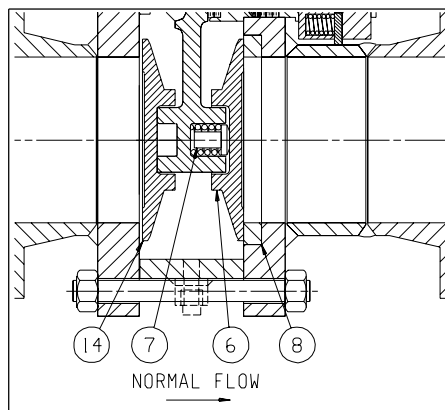
Notes:

1) All valves are supplied with (1) 1/2" Purge/Drain connection. (Shown in dotted lines on drawings)

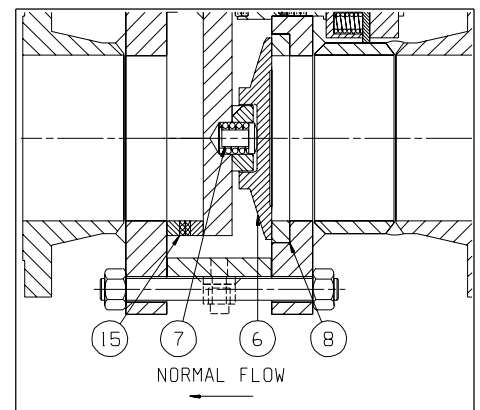
NO.	NAME	DESCRIPTION (C.S. BODY)	DESCRIPTION (S.S. BODY)
1	Body Plates	Carbon Steel A516 Gr. 70	Stainless Steel A240 Gr. 316 w/ Stell. #6
2	Wrench	Carbon Steel	Carbon Steel
3	Post	17-4 PH Stainless Steel	17-4 PH Stainless Steel
4	Lever Arm	Cast 17-4 PH Stainless Steel	Cast 17-4 PH Stainless Steel
5	Bearings	Semi - Steel	Nitronic 60
6	Disc	Cast Stellite #6	Cast Stellite #6
7	Springs	17-7 PH Stainless Steel	17-7 PH Stainless Steel
8	Seat	Cast Stellite #6	Cast Stellite #6
9	Spacer Ring	Carbon Steel A106 Gr. C	Stainless Steel A312 TP316
10	Gaskets	Corrugated 304 Stainless Steel	Corrugated 304 Stainless Steel
11	Packing	See "Packing Options" Sheet	See "Packing Options" Sheet
12	Gland	Nitronic 60	Nitronic 60
13	Gland Springs	17-7 PH Stainless Steel	17-7 PH Stainless Steel
14	Lens Disc	Cast Stellite #6	Cast Stellite #6
15	Lock Bar	Stellite #6 Faced Carbon Steel	Stellite #6 Faced Stainless Steel



DOUBLE DISC ("DD" SERIES)



LENS DISC ("LD" SERIES)



LOCK BAR ("LB" SERIES)

EVERLASTING

VALVE
COMPANY, INC

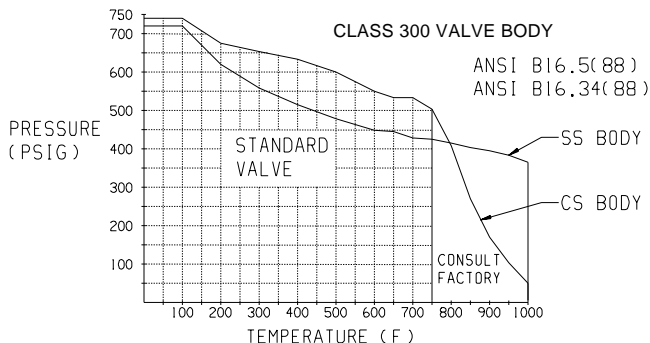
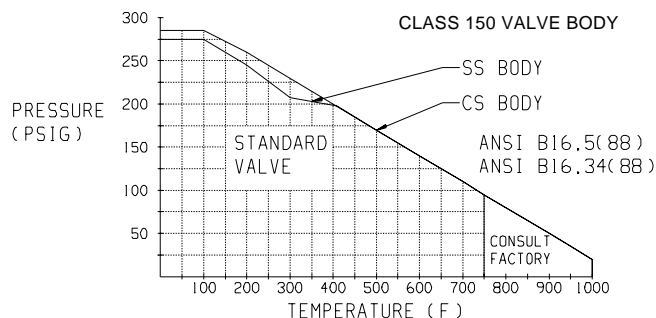
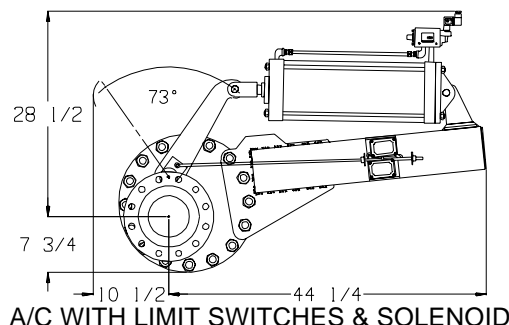
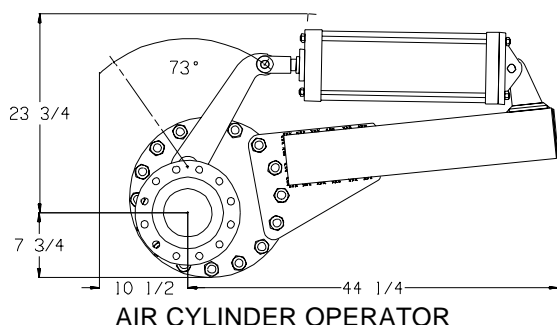
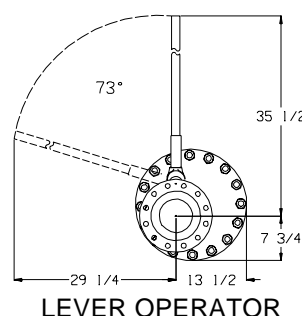
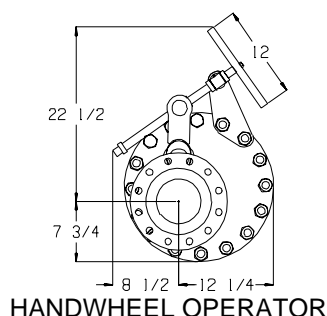
108 SOMOGYI CT., S. PLAINFIELD N.J. 07080
 TEL: 908-769-0700 FAX: 908-769-8697

Member
VMA

CL150
CL300

6"

CLASS 150 & 300 SD, DD, LD, LB SERIES



MAXIMUM DIFFERENTIAL PRESSURE DURING VALVE CYCLING FOR CL150 (4)

FLUID	CYL @ 60 PSI AIR	CYL @ 80 PSI AIR	CYL @ 100 PSI AIR	WRENCH	HANDWHEEL
CLEAN FLUID	135	180	230	70	500
20% SLURRY ⁽¹⁾	85	130	180	20	355
50% SLURRY ⁽¹⁾	70	115	165	5	310
75% SLURRY ⁽¹⁾	55	100	150	NR	260
100% SLURRY	35	80	130	NR	200

MAXIMUM DIFFERENTIAL PRESSURE DURING VALVE CYCLING FOR CL300 (4)

FLUID	CYL @ 60 PSI AIR	CYL @ 80 PSI AIR	CYL @ 100 PSI AIR	WRENCH	HANDWHEEL
CLEAN FLUID	245	330	415	70	500
20% SLURRY ⁽¹⁾	195	280	365	20	355
50% SLURRY ⁽¹⁾	180	265	350	5	310
75% SLURRY ⁽¹⁾	165	250	335	NR	260
100% SLURRY	145	230	315	NR	200

- NOTES:
1. For vertically positioned valves in slurry service, use 100% slurry value. For solid columns, Consult factory.
 2. All air cylinder values in Table include a Safety Factor of 1.5.
 3. Gear, hydraulic or electric operators can be sized per customer specs as applicable - consult factory.
 4. Consult Everlasting for higher differential pressures or for any clarifications.

EVERLASTING

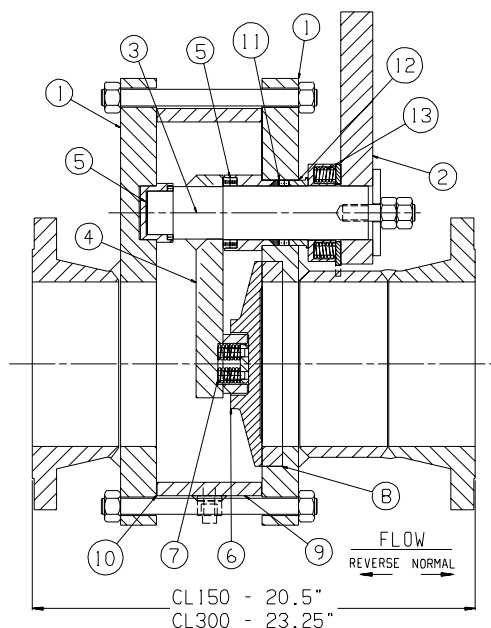
VALVE
COMPANY, INC

108 SOMOGYI CT., S. PLAINFIELD N.J. 07080
TEL: 908-769-0700 FAX: 908-769-8697

SS-6-90

CLASS 150 & 300 SD, DD, LD, LB SERIES

CL150
CL300 **8"**



SINGLE DISC ("SD" SERIES)

SPECIFICATIONS

Rating: CL150 & CL300 ANSI B16.34

Temp. Range: -20 F to 750 F

Ends: RF Flanged

Body: Carbon Steel & 316 Stainless Steel

Seats: Cast Stellite #6

Discs: Stellite #6 Faced Carbon Steel

Configurations: SD (Single Disc) shown at left

DD (Double Disc) bottom left

LD (Lens Disc) bottom center

LB (Lock Bar) bottom right

Operators: Handwheel; Air Cylinder

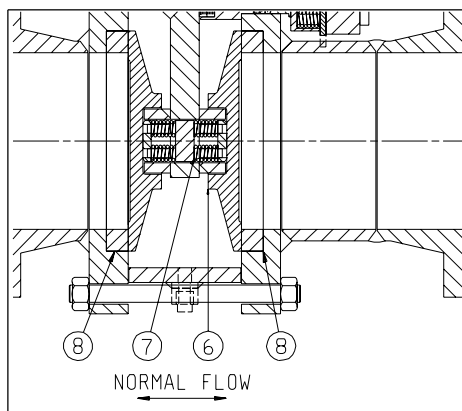
Accessories: Limit Switches; Solenoid; Fail Safe (Air Reservoir & Solenoid). Refer to Standard Accessory Sheets for accessory specifications.

Est. Cv : 2120

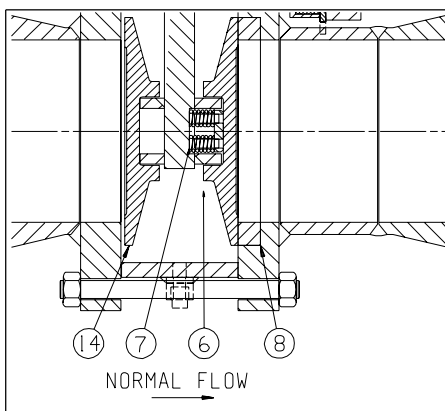
Notes:

1) All valves are supplied with (1) 3/4" Purge/Drain connection. (Shown in dotted lines on drawings)

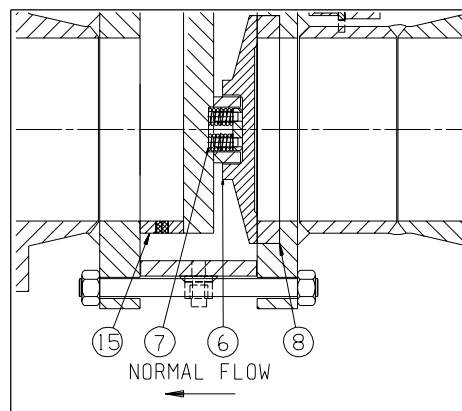
NO.	NAME	DESCRIPTION (C.S. BODY)	DESCRIPTION (S.S. BODY)
1	Body Plates	Carbon Steel A516 Gr. 70	Stainless Steel A240 Gr. 316 w/ Stell. #6
2	Wrench	Carbon Steel	Carbon Steel
3	Post	17-4 PH Stainless Steel	17-4 PH Stainless Steel
4	Lever Arm	Carbon Steel A516 Gr. 70	Stainless Steel A240 Gr. 316
5	Bearings	Semi - Steel	Nitronic 60
6	Disc	Stellite #6 Faced Carbon Steel	Stellite #6 Faced Stainless Steel
7	Springs	17-7 PH Stainless Steel	17-7 PH Stainless Steel
8	Seat	Cast Stellite #6	Cast Stellite #6
9	Spacer Ring	Carbon Steel A516 Gr. 70	Stainless Steel A240 Gr. 316
10	Gaskets	Corrugated 304 Stainless Steel	Corrugated 304 Stainless Steel
11	Packing	See "Packing Options" Sheet	See "Packing Options" Sheet
12	Gland	Nitronic 60	Nitronic 60
13	Gland Springs	17-7 PH Stainless Steel	17-7 PH Stainless Steel
14	Lens Disc	Cast Stellite #6	Cast Stellite #6
15	Lock Bar	Stellite #6 Faced Carbon Steel	Stellite #6 Faced Stainless Steel



DOUBLE DISC ("DD" SERIES)



LENS DISC ("LD" SERIES)



LOCK BAR ("LB" SERIES)

EVERLASTING

VALVE
COMPANY, INC

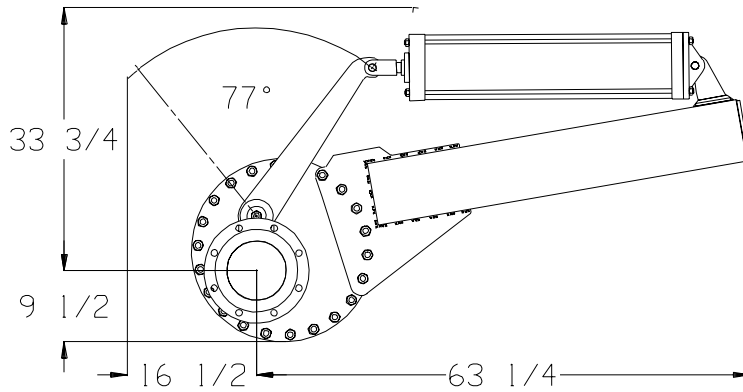
108 SOMOGYI CT., S. PLAINFIELD N.J. 07080
TEL: 908-769-0700 FAX: 908-769-8697

Member
VMA

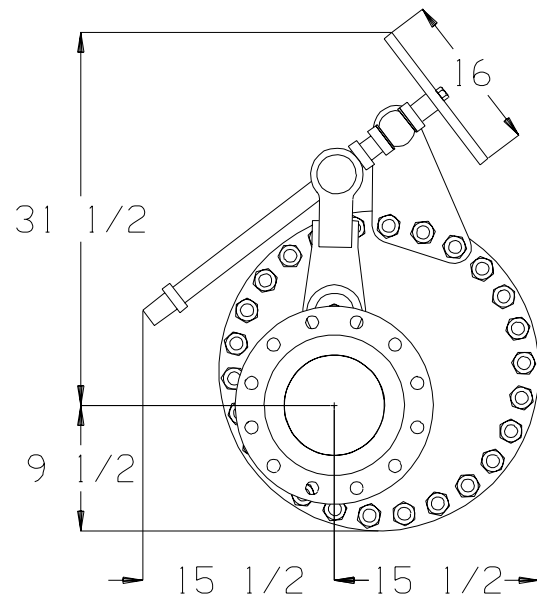
CL150
CL300

8"

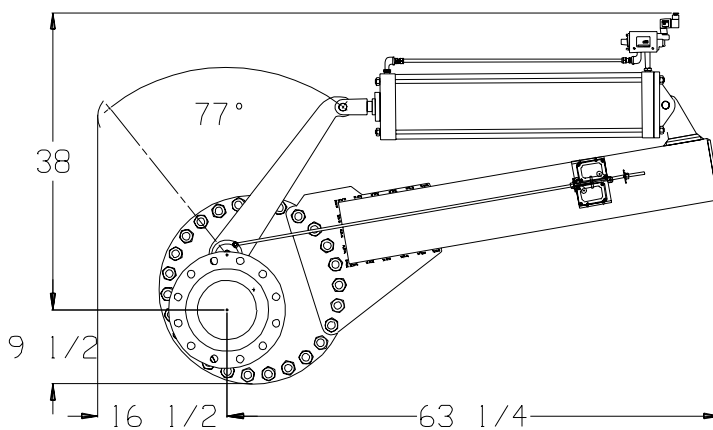
CLASS 150 & 300 SD, DD, LD, LB SERIES



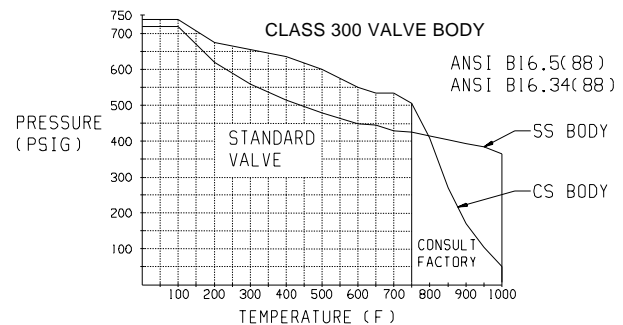
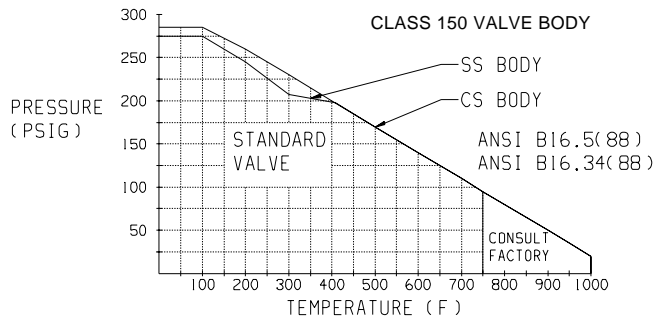
AIR CYLINDER OPERATOR



HANDWHEEL OPERATOR



A/C WITH LIMIT SWITCHES & SOLENOID



MAXIMUM DIFFERENTIAL PRESSURE DURING VALVE CYCLING FOR CL150 & CL300 (4)

FLUID	CYL @ 60 PSI AIR	CYL @ 80 PSI AIR	CYL @ 100 PSI AIR	HANDWHEEL
CLEAN FLUID	165	220	275	500
20% SLURRY ⁽¹⁾	115	170	225	355
50% SLURRY ⁽¹⁾	100	155	210	310
75% SLURRY ⁽¹⁾	85	140	195	260
100% SLURRY	65	120	175	200

- NOTES:
1. For vertically positioned valves in slurry service, use 100% slurry value. For solid columns, Consult factory.
 2. All air cylinder values in Table include a Safety Factor of 1.5.
 3. Gear, hydraulic or electric operators can be sized per customer specs as applicable - consult factory.
 4. Consult Everlasting for higher differential pressures or for any clarifications.

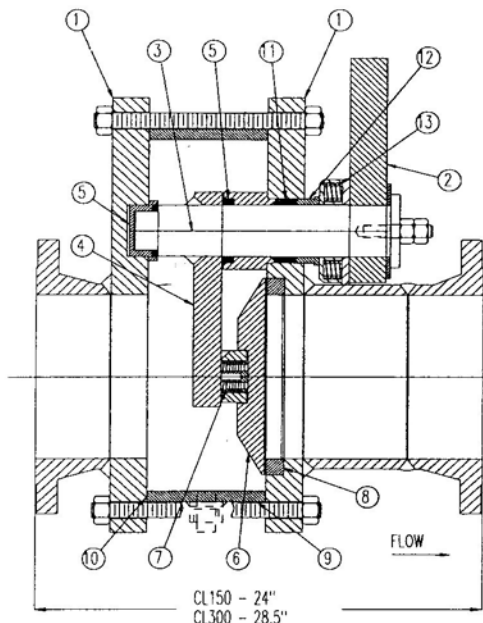
EVERLASTING

VALVE
COMPANY, INC

108 SOMOGYI CT., S. PLAINFIELD N.J. 07080
TEL: 908-769-0700 FAX: 908-769-8697

SS-8-90

SINGLE DISC ("SD" SERIES)



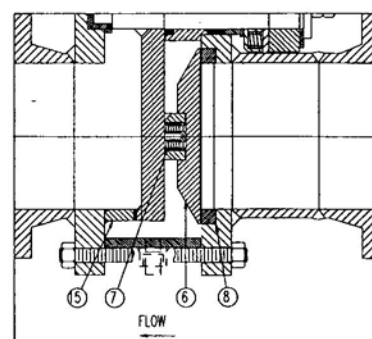
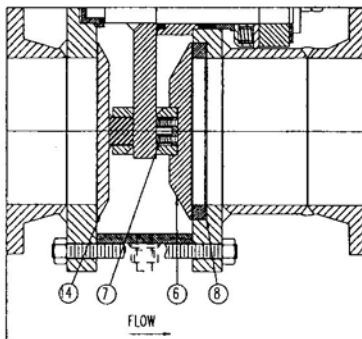
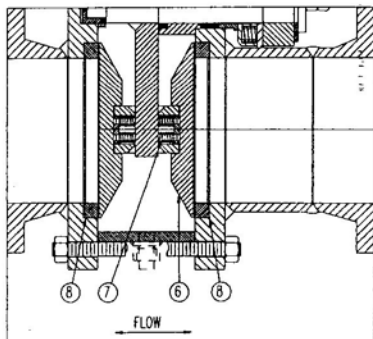
SPECIFICATIONS

Rating:	CL150 & CL300 ANSI B16.34
Temp. Range:	-20°F TO 750°F
Ends:	RF Flanged
Body:	Carbon Steel & 316 Stainless Steel
Seats & Disc:	Stellite #6 Overlay
Configuration:	SD (Single Disc) shown at left DD (Double Disc) bottom left LD (Lens Disc) bottom center LB (Lock Bar) bottom right
Operators:	Air Cylinder; Handwheel
Accessories:	Limit Switches; Solenoid; Fail Safe (Air Reservoir & Solenoid). Refer to Standard Accessory Sheets for accessory specifications.
Est. Cv:	3300

Notes:

1) All valves are supplied with (1) 1"NPT Purge/Drain connection. (Shown in dotted lines on drawings)

NO.	NAME	DESCRIPTION (C.S. BODY)	DESCRIPTION (S.S. BODY)
1	Body Plates	Carbon Steel A516 Gr. 70	Stainless Steel A240 Gr. 316
2	Wrench	Carbon Steel	Carbon Steel
3	Post	17-4 PH Stainless Steel	17-4 PH Stainless Steel
4	Lever Arm	Carbon Steel A516 Gr.70	Stainless Steel A240 Gr.316
5	Bearings	Semi - Steel	Nitronic 60
6	Disc	Carbon Steel / Stellite #6 Overlay	Stainless Steel / Stellite #6 Overlay
7	Spring	Carbon Steel A516 Gr. 70	Stainless Steel A240 Gr.316
8	Seat	Carbon Steel / Stellite #6	Stainless Steel / Stellite #6
9	Spacer Ring	Carbon Steel A516 Gr. 70	Stainless Steel A240 Gr.316
10	Gaskets	Corrugated 304 Stainless Steel	Corrugated 304 Stainless Steel
11	Packing	See "Packing Options" Sheet	See "Packing Options" Sheet
12	Gland	Nitronic 60	Nitronic 60
13	Gland Springs	17-7 PH Stainless Steel	17-7 PH Stainless Steel
14	Lens Disc	Carbon Steel	316 Stainless Steel
15	Lock Bar	Stellite #6 Faced Carbon Steel	Stellite #6 Faced Stainless Steel



DOUBLE DISC ("DD" SERIES)

LENS DISC ("LD" SERIES)

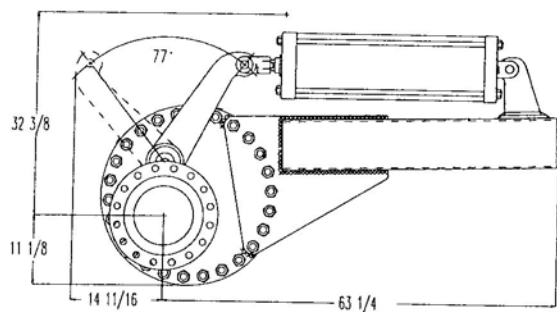
LOCK BAR ("LB" SERIES)

PROCESS SERIES

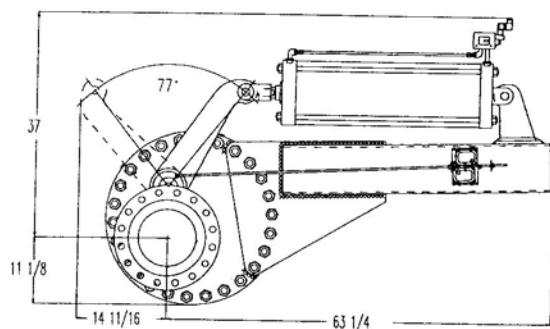
CLASS 150 & 300 SD, DD, LD, LB SERIES

CL150
CL300

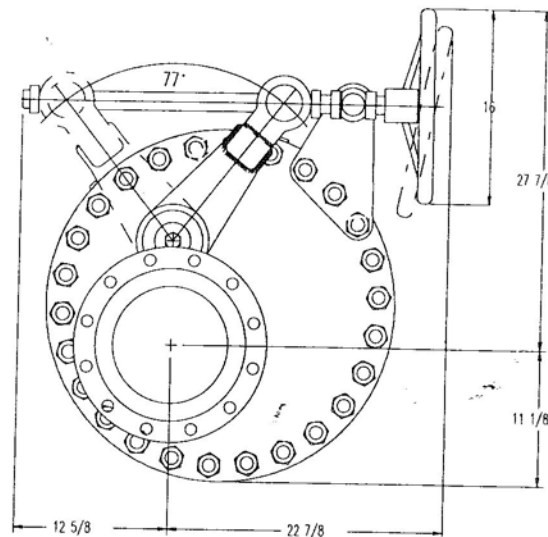
10"



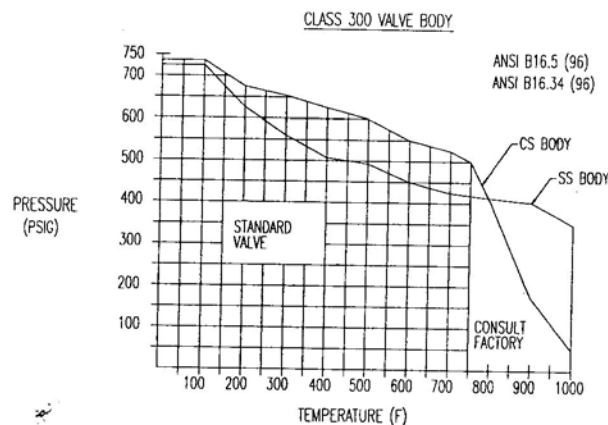
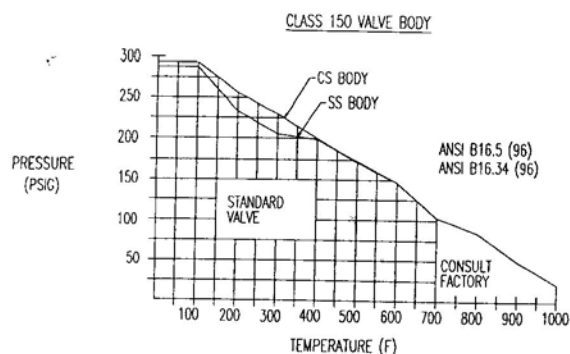
AIR CYLINDER OPERATOR



A/C WITH LIMIT SWITCHES & SOLENOID



HANDWHEEL OPERATOR



MAXIMUM DIFFERENTIAL PRESSURE DURING VALVE CYCLING FOR CL150 & CL300 (4)

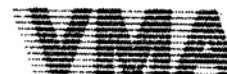
FLUID	CYL @ 60 PSI AIR	CYL @ 80 PSI AIR	CYL @ 100 PSI AIR	HANDWHEEL
CLEAN FLUID	125	170	215	500
20% SLURRY (1)	75	120	165	355
50% SLURRY (1)	60	105	150	310
75% SLURRY (1)	50	95	140	260
100% SLURRY	25	70	115	200

- NOTES:
1. For vertically positioned valves in slurry service, use 100% slurry value. For solid columns, Consult factory.
 2. All air cylinder values in table include a Safety Factor of 1.5.
 3. Gear, hydraulic or electric operators can be sized per customer specs as applicable -- Consult factory
 4. Consult Everlasting for higher differential pressures or for any clarifications.

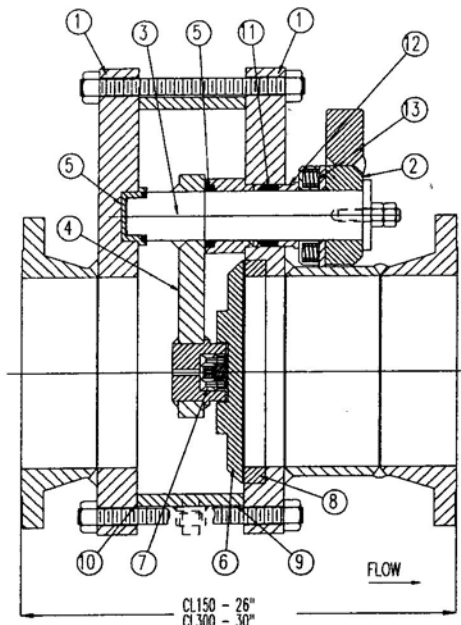


Everlasting
VALVE COMPANY, INC.

108 SOMOGYI COURT
S. PLAINFIELD N.J. 07080
TEL: (908) 769-0700 FAX: (908) 769-8697
WEB: WWW.EVERLASTINGVALVECO.COM
ISO 9001 CERTIFIED!



SINGLE DISC ("SD" SERIES)



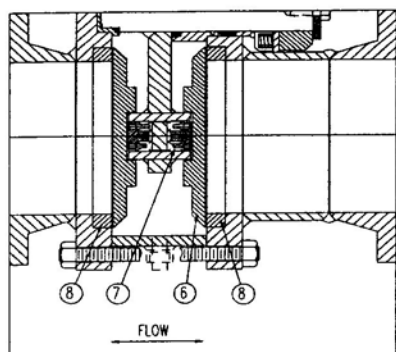
SPECIFICATIONS

Rating:	CL150 & CL300 ANSI B16.34
Temp. Range:	-20°F TO 750°F
Ends:	RF Flanged
Body:	Carbon Steel & 316 Stainless Steel
Seats & Disc:	Stellite #6 Overlay
Configuration:	SD (Single Disc) shown at left DD (Double Disc) bottom left LD (Lens Disc) bottom center LB (Lock Bar) bottom right
Operators:	Air Cylinder; Handwheel
Accessories:	Limit Switches; Solenoid; Fail Safe (Air Reservoir & Solenoid). Refer to Standard Accessory Sheets for accessory specifications.
Est. Cv:	4920

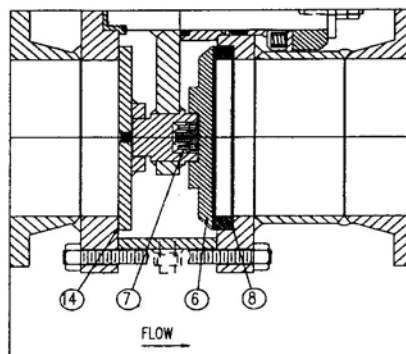
Notes:

1) All valves are supplied with (1) 1"NPT Purge/Drain connection. (Shown in dotted lines on drawings)

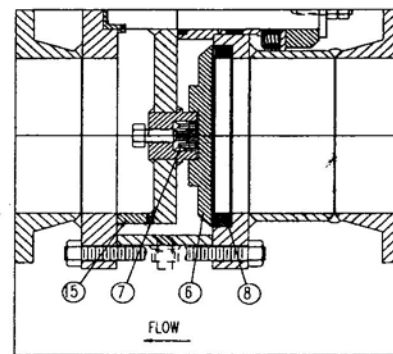
NO.	NAME	DESCRIPTION (C.S. BODY)	DESCRIPTION (S.S. BODY)
1	Body Plates	Carbon Steel A516 Gr. 70	Stainless Steel A240 Gr. 316
2	Wrench	Carbon Steel	Carbon Steel
3	Post	17-4 PH Stainless Steel	17-4 PH Stainless Steel
4	Lever Arm	Carbon Steel A516 Gr. 70	Stainless Steel A240 Gr.316
5	Bearings	Semi - Steel	Nitronic 60
6	Disc	Carbon Steel / Stellite #6 Overlay	Stainless Steel / Stellite #6 Overlay
7	Spring	Carbon Steel A516 Gr. 70	Stainless Steel A240 Gr.316
8	Seat	Carbon Steel / Stellite #6	Stainless Steel / Stellite #6
9	Spacer Ring	Carbon Steel A516 Gr. 70	Stainless Steel A240 Gr.316
10	Gaskets	Corrugated 304 Stainless Steel	Corrugated 304 Stainless Steel
11	Packing	See "Packing Options" Sheet	See "Packing Options" Sheet
12	Gland	Nitronic 60	Nitronic 60
13	Gland Springs	17-7 PH Stainless Steel	17-7 PH Stainless Steel
14	Lens Disc	Carbon Steel	316 Stainless Steel
15	Lock Bar	Stellite #6 Faced Carbon Steel	Stellite #6 Faced Stainless Steel



DOUBLE DISC ("DD" SERIES)



LENS DISC ("LD" SERIES)

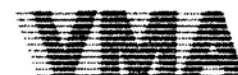


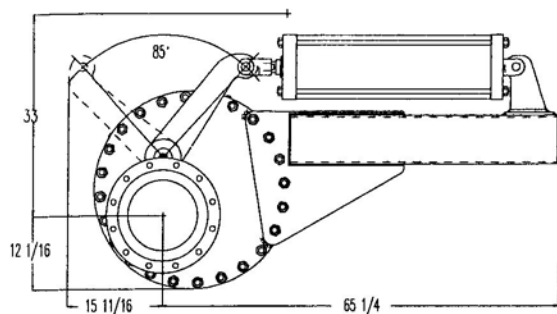
LOCK BAR ("LB" SERIES)



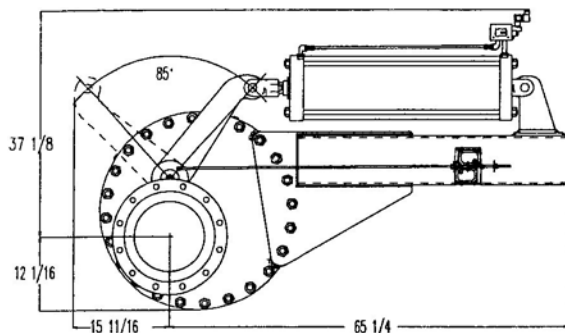
Everlasting
VALVE COMPANY, INC.

108 SOMOGYI COURT
S. PLAINFIELD N.J. 07080
TEL: (908) 769-0700 FAX: (908) 769-8697
WEB: WWW.EVERLASTINGVALVECO.COM
ISO 9001 CERTIFIED!

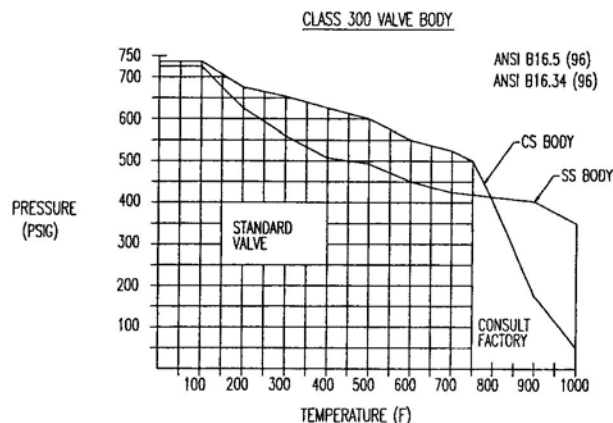
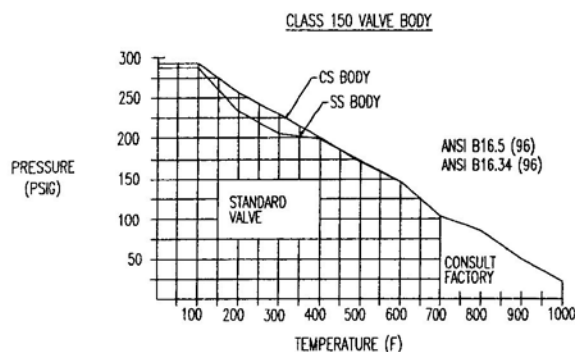




AIR CYLINDER OPERATOR



A/C WITH LIMIT SWITCHES & SOLENOID



MAXIMUM DIFFERENTIAL PRESSURE DURING VALVE CYCLING FOR CL150 & CL300 (4)

FLUID	CYL @ 60 PSI AIR	CYL @ 80 PSI AIR	CYL @ 100 PSI AIR	HANDWHEEL
CLEAN FLUID	135	185	235	CONSULT FACTORY
20% SLURRY (1)	85	135	185	
50% SLURRY (1)	70	120	170	
75% SLURRY (1)	60	110	160	
100% SLURRY	35	85	135	

- NOTES:
- For vertically positioned valves in slurry service, use 100% slurry value. For solid columns, Consult factory.
 - All air cylinder values in table include a Safety Factor of 1.5.
 - Gear, hydraulic or electric operators can be sized per customer specs as applicable – Consult factory
 - Consult Everlasting for higher differential pressures or for any clarifications.



Everlasting
VALVE COMPANY, INC.

108 SOMOGYI COURT
S. PLAINFIELD N.J. 07080
TEL: (908) 769-0700 FAX: (908) 769-8697
WEB: WWW.EVERLASTINGVALVECO.COM
ISO 9001 CERTIFIED!

