



www.evcousa.com

ENGINEERING YOUR UPTIME.

CEMENT INDUSTRY VALVE SOLUTION GUIDE

Cement Production & Handling Environment

Cement plants operate in high-temperature, abrasive, and dusty environments, making valve selection critical for long-term reliability and safety.

Key process stages include:

1. Raw material preparation (crushing, blending)
2. Preheating & calcining
3. Clinker production in the rotary kiln
4. Clinker cooling & grinding (finish milling)
5. Cement storage, packaging, and dispatch

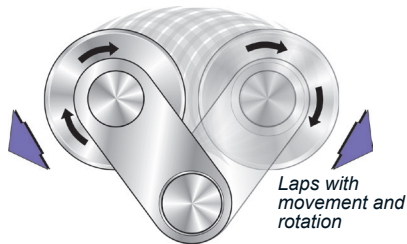
Across these stages, Everlasting's rotating disc valves are ideal for handling abrasive powders, dense slurries, and hot air streams that quickly wear out conventional valves.



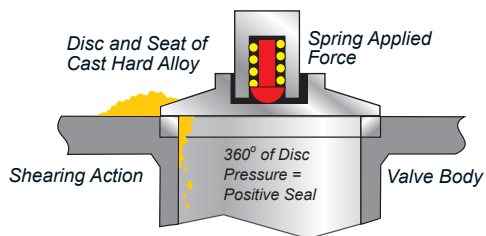
The Everlasting Diverters and BMV Valve Series are excellent in fly ash, Portland cement, kiln dust, alumina hydrate, alumina silica, calcined kaolin, sugar, titanium dioxide, ilmenite and rutile ores, pet coke, coal, catalyst and many other abrasives. Please request our booklet on the Everlasting Bulk Material Valves.

Everlasting Valves & Diverters Features:

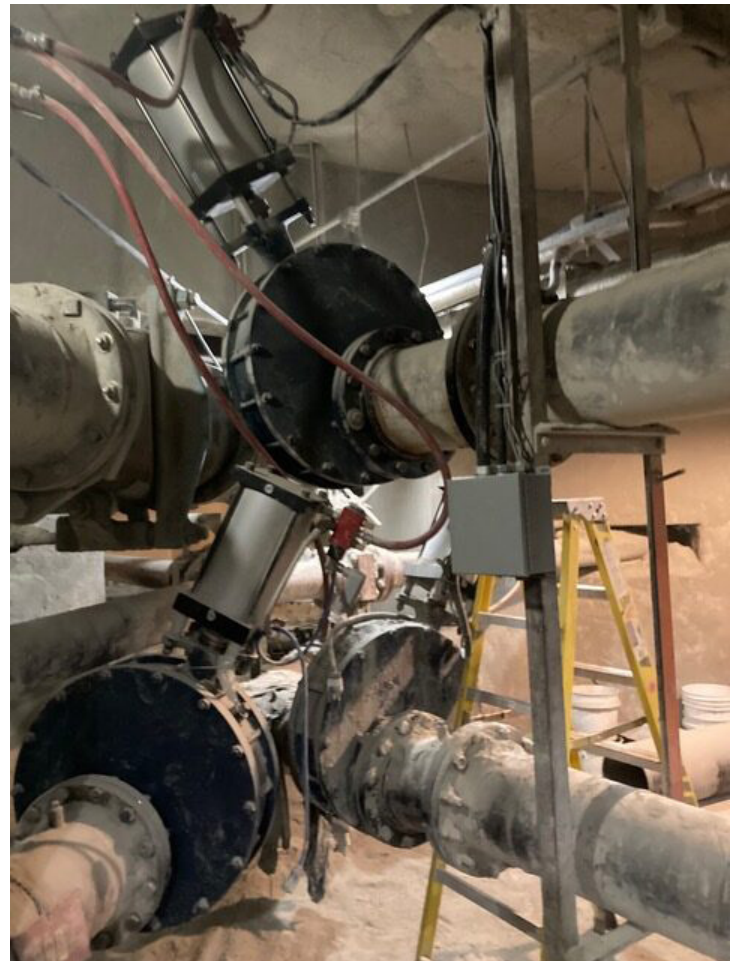
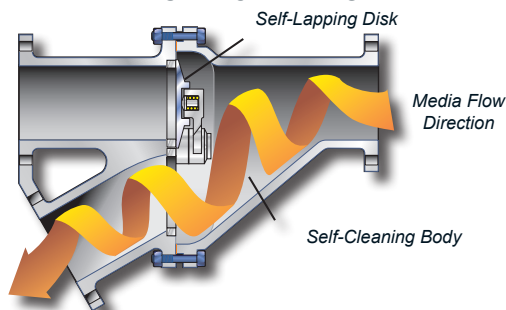
SELF-LAPPING SEALING SURFACES



POSITIVE SHUT-OFF



SELF-CLEANING



Cement Plant in Detroit-MI; Cement Transfer using Everlasting BMV Series Process Valves, Replacing 60 pinch valves decreased down-time in-between maintenance schedules significantly.

Why Everlasting Valves Excel in Cement Service Operations:

- Handles extreme abrasion: Rotating disc and self-lapping seat resist dust wear.
- Self-cleaning design: Prevents packing fouling from fine cement dust.
- Temperature and pressure resilience: Ideal for kiln and pre-heater environments.
- Low maintenance: Serviceable; long life in abrasive duty.
- Proven reliability: Used for decades in cement, mining, and aggregate plants.

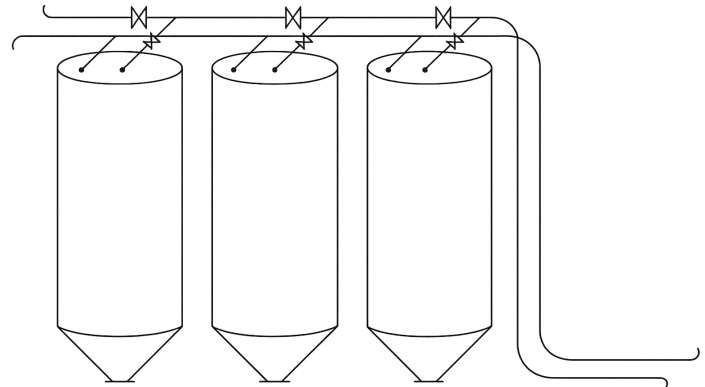


The Everlasting Diverter Series

Cement Manufacture Diagram

Application and Everlasting Valve Product Fit:

- Silo Diverters
- FK Pump Isolation
- FK Pump Crossover
- Kiln Fuel Feed
- Cement Kiln Dust Conveying
- Hood Seal
- Clinker Cooler
- Cement Cooler
- Raw Mill Feed
- Finish Mill Feed
- Truck Load-out
- Railroad Car Unloading
- Barge Unloading



Grinding Facility: Plant grinds clinker and stores in silos for truck load out. Everlasting BMVs &/or Diverters are the perfect choice for this application.



Bulk Material Valve



Diverter Valve

Process Area	Media	Recommended Valve	Function
Pre-heater Feed	Dust, Raw Meal	Process	Flow shut-off / Isolation
Rotary Kiln	Hot Dust & Gas		Isolation / Switching
Clinker Cooler	Hot Clinker		Discharge Control
Finish Mill	Cement Powder		Flow Shut-off
Slurry Mixing	Wet Feed		On/off / Throttling
Utilities	Hot Water	Blow-down	Purge / Cleaning



www.evcousa.com

Service Excellence in Action

When you choose Everlasting Valve Company, you're not just selecting a product—you're gaining a partner dedicated to long-term performance and support. Our commitment to service extends far beyond standard maintenance or repair. It means timely access to our knowledgeable team of engineers and service professionals—ready to respond anytime, anywhere your operations demand.

At Everlasting, we pride ourselves on becoming an extension of your team. You can count on us to take ownership of every challenge and deliver practical, lasting solutions. When issues arise, our technical experts go beyond the symptoms to uncover the true cause. We evaluate your complete system to identify and resolve problems with precision and care.

Our comprehensive service approach is designed to maximize equipment reliability, enhance operational efficiency, and reduce total cost of ownership.

Contact us today for your next project!



Whether you are requesting a quote, need more information, or want to discuss customized valves that address your specific requirements, just let us know. Everlasting Valve is committed to providing prompt, responsive service, every time.

Everlasting Valve Company

108 Somogyi Court
South Plainfield, New Jersey 07080

☎ 908.769.0700

📠 908.769.8697

✉ info@evcousa.com

🌐 www.evcousa.com

Distributed by:

