

BARGE UNLOADER CROSSOVER VALVES CEMENT TERMINAL CASE STUDY



THE CHALLENGE

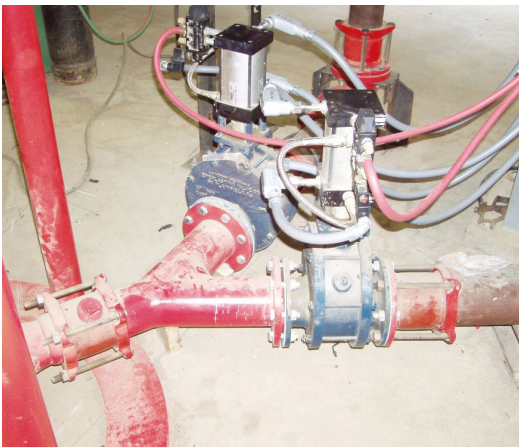
Bulk cement handling systems experience constant abrasion, dust infiltration, and high-velocity material flow issues. Manual line blinds and conventional valves create safety risks, slow changeovers, and frequent maintenance events. **Key points about the application:**

- Numerous Spectacle Blind Valves were used to isolate media
- Switching required 20+ minutes per valve operation
- Frequent cycles (3/day) with abrasive cement powder



OUR SOLUTION

Everlasting rotating disc valves replace manual blinds with an automated, self-lapping design that prevents material packing and provides reliable isolation during continuous barge unloading operations. Everlasting Valve Application Engineers designed and customized our Bulk Material Valves (BMV Series) to automate this operation. **Results delivered:**



- Pneumatic valve actuation for quick, reliable switching
- Double-disc sealing offering leak-free bi-directional operation during isolation sequence, and eliminating line contamination compared to the legacy operation
- Carbon steel body with 440 SS discs and seats to withstand the harsh media abrasion
- Automation eliminated the need for an onsite maintenance operator for media isolation

TOTAL COST OF OWNERSHIP (TCO)

Conventional Valves

- Long manual switching time increases labor cost
- Abrasive cement causes accelerated wear
- Frequent maintenance and adjustment
- Higher downtime and throughput loss over time

EV Bulk Material Valves

- Rapid pneumatic switching reduces labor and delay
- Abrasion-resistant materials extend service life
- Minimal maintenance in daily cycling service
- Lower lifetime cost despite higher initial investment

TCO Result

Faster operations and fewer interventions equates to a lower total cost of ownership over the life of the terminal.

OVER A CENTURY OF FIELD PROVEN SERVICE COVERING APPLICATIONS WORLDWIDE



Our industrial valves operate longer, perform better, and outlast every other severe-service valve on the market. But performance is only the beginning. We are far more than a typical industrial valve manufacturer—when you engage with us, you gain a partner committed to helping you achieve safer, more efficient, and more reliable plant operations. We take the time to understand your specific process conditions, operational challenges, and performance goals, whether they involve improving production efficiency, reducing downtime, or lowering maintenance costs.

Engineered for unmatched durability, reliability, and total lifecycle value, our boiler blowdown valves, diverter valves, bulk-material valves, and process valves routinely replace traditional knife-gate, pinch, ball, and globe valves in the most demanding environments. Around the world, Everlasting Valve continues to set the standard as the trusted choice for severe-service applications where performance and longevity matter most.

Everlasting Valve Company — Wears In, Not Out®.

Severe-service valve solutions for cement, mining, power generation, and bulk material handling industries.



VALUE DELIVERED

Value Delivered:

- Eliminated manual line blinding and safety exposure
- Reduced unloading downtime and labor
- Improved silo routing flexibility
- Lowered maintenance cost in abrasive cement service
- Increased terminal throughput and reliability



BMV Series



Specifications	Description
Industry	Cement Manufacturing / Bulk Material Handling
Application	Barge Unloader Crossover Valves Feeding Multiple Silos
Process Media	Portland Cement Powder / Calcium Silicate (~200 mesh)
Valve Type	Everlasting Bulk Material Rotating Disc Valve (BMV Series)
Size	10-inch
Pressure Rating	100 PSIG
Actuation	Pneumatic
Cycle Rate	= 3 cycles/day

If your bulk material handling process relies on manual blinds or valves that pack with powder, Everlasting provides a safer, more reliable solution.



108 Somogyi Court
South Plainfield, New Jersey 07080

☎ 908.769.0700

📠 908.769.8697

✉ info@evcousa.com

🌐 www.evcousa.com